

AQ-110PLV

Arc sensor device with overcurrent

Instruction manual

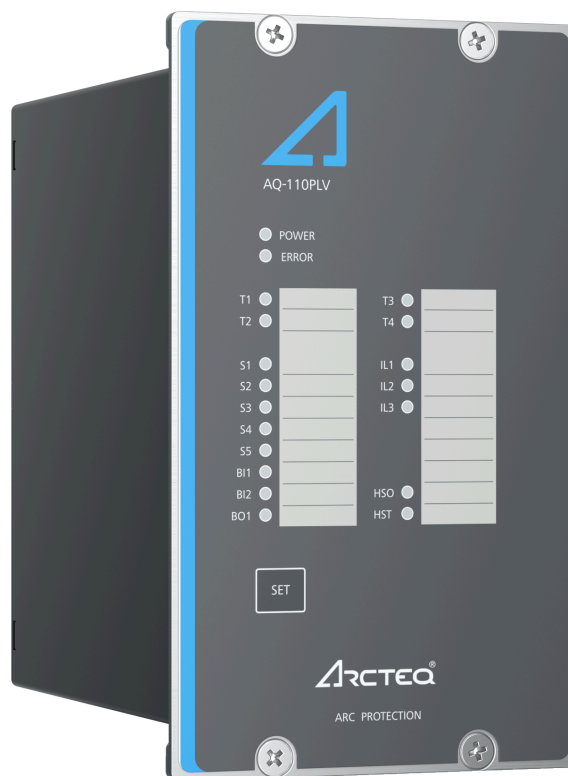


Table of contents

1 Document information	4
2 Safety information	6
3 Abbreviations	7
4 General	8
5 Device features	9
6 Connections	10
6.1 Inputs	11
6.1.1 Current transformer measurement inputs	11
6.1.2 Rogowski coil measurement inputs	12
6.1.3 Arc sensor channels	12
6.1.4 Binary inputs	13
6.2 Outputs	13
6.2.1 Binary outputs	13
6.2.2 High-speed output(s)	14
6.2.3 Trip relays	15
6.2.4 System failure relay	15
6.3 Auxiliary voltage	15
7 Arc sensors	16
7.1 Arc light point sensor AQ-01	16
7.2 Arc light and pressure point sensor AQ-02	17
7.3 Arc light fiber optic loop sensor AQ-06	17
7.4 Arc light fiber optic loop sensor AQ-07	17
7.5 Arc light fiber optic loop sensor AQ-08	18
7.6 Sensor dependencies	18
7.7 Wiring of point sensors	19
7.8 Using the sensor bracket	19
8 Operation and configuration	21
8.1 Current threshold settings	21
8.2 DIP switch settings	21
8.3 Logic schemes	25
8.3.1 SS:0a	27
8.3.2 SS:0b	30
8.3.3 SS:1a	32
8.3.4 SS:1b	34
8.3.5 SS:2a	36
8.3.6 SS:2b	38
8.4 Push button (SET)	39
8.4.1 System setup (auto-configuration)	40
8.4.2 Reset	40
8.4.3 Input connection check	41
8.5 Circuit breaker failure protection	41
8.6 LED indicator functions	41
8.7 LED operations guide	42
8.8 Modbus communication	43
8.9 Non-volatile memory	47
9 System self-supervision	48
10 Dimensions and installation	50
11 Testing	55
11.1 Testing the light-only mode	55

11.2 Testing the light and current mode	55
11.3 Testing the CBFP function	56
11.4 Testing the operation time	56
11.5 Test plan example	56
12 Troubleshooting	58
13 Technical data	59
13.1 Operating times	59
13.2 Auxiliary voltage	59
13.3 Current measuring circuits	59
13.4 Rogowski coil measurement inputs	60
13.5 Binary inputs	60
13.6 Trip relays	60
13.7 High-speed output(s)	61
13.8 Binary output(s)	61
13.9 System failure relay	61
13.10 Point sensors	62
13.11 Fiber optic loop sensors	62
13.12 Disturbance tests	63
13.13 Voltage tests	64
13.14 Mechanical tests	64
13.15 Environmental conditions	64
13.16 Casing	64
14 Ordering information	66
15 Contact and reference information	68

Disclaimer

Please read these instructions carefully before using the equipment or taking any other actions with respect to the equipment. Only trained and qualified persons are allowed to perform installation, operation, service or maintenance of the equipment. Such qualified persons have the responsibility to take all appropriate measures, including e.g. use of authentication, encryption, anti-virus programs, safe switching programs etc. necessary to ensure a safe and secure environment and usability of the equipment. The warranty granted to the equipment remains in force only provided that the instructions contained in this document have been strictly complied with.

Nothing contained in this document shall increase the liability or extend the warranty obligations of the manufacturer Arcteq Relays Ltd. The manufacturer expressly disclaims any and all liability for any damages and/or losses caused due to a failure to comply with the instructions contained herein or caused by persons who do not fulfil the aforementioned requirements. Furthermore, the manufacturer shall not be liable for possible errors in this document.

Please note that you must always comply with applicable local legislation and regulations. The manufacturer gives no warranties that the content of this document is in all respects in line with local laws and regulations and assumes no liability for such possible deviations.

You are advised to notify the manufacturer in case you become aware of any errors in this document or of defects in the equipment.

The manufacturer reserves the right to update or amend this document at any time.

Copyright

Copyright © Arcteq Relays Ltd. 2025. All rights reserved.

1 Document information

Table. 1 - 1. History of Revision 2.

Revision	1.00
Date	September 2020
Changes	- The first revision of the manual.
Revision	1.01
Date	January 2023
Changes	<ul style="list-style-type: none"> - Updated the Arcteq logo on the cover. - Replaced "one fifths" with "; 1 A or 5 A secondary nominal can be selected" in the "Unit features" chapter. - Updated the distance between the flash and the unit in the "Testing the unit operation time" chapter. - Unified terminology used throughout the manual (e.g. unit and device means the same thing. Now all AQ 100 series relays are called "devices"). - Improved many existing drawings. - Rearranged topics into a more logical order. - Added connection drawings to input and output descriptions under "Connections" chapter. - Added hyperlinks to chapters. (e.g. "See Device features chapter for more information") - Listed more features in Device features chapter. - T3 is now considered to be normally open by default and normally closed as an order option. - Added information about binary output pulse messages. - Many tables have been simplified and made easier to read. - Scheme matrixes and simplified logic diagrams have been made more detailed in Available schemes chapter.
Revision	1.02
Date	April 2023
Changes	<ul style="list-style-type: none"> - Small changes to visual style. - Small improvements to descriptions.
Revision	1.03
Date	September 2024
Changes	<ul style="list-style-type: none"> - Fixed SS:1a logic matrix. BO1 is not activated from I> in this scheme. - Added point sensor dimensions.

Table. 1 - 2. History of Revision 2.

Revision	2.05
Date	November 2024
Changes	<ul style="list-style-type: none"> - Split AQ-110PLV and AQ-110FLV into separate manuals. - Unified revision numbering with AQ-110P and AQ-110F.

Revision	2.06
Date	July 2025
Changes	- Rogowski addition → Changes to the contents as needed throughout the document.
Revision	2.07
Date	August 2025
Changes	<ul style="list-style-type: none">- Updated the DIP switch descriptions.- Made the polarity of Rogowski coil connections clearer.- Added the technical data for the X3, X4 & X5 connectors when Rogowski inputs are used.- Updated the order code for AQ-110PLV.
Revision	2.08
Date	September 2025
Changes	- Updated the Modbus map in the Modbus communication chapter.

2 Safety information

This document contains important instructions that should be saved for future use. Read the document carefully before installing, operating, servicing, or maintaining this equipment. Please read and follow all the instructions carefully to prevent accidents, injury and damage to property.

Additionally, this document may contain four (4) types of special messages to call the reader's attention to useful information as follows:

**NOTICE!**

"Notice" messages indicate relevant factors and conditions to the concept discussed in the text, as well as to other relevant advice.

**CAUTION!**

"Caution" messages indicate a potentially hazardous situation which, if not avoided, could result in minor or moderate personal injury, in equipment/property damage, or software corruption.

**WARNING!**

"Warning" messages indicate a potentially hazardous situation which, if not avoided, could result in death or serious personal injury as well as serious damage to equipment/property.

**DANGER!**

"Danger" messages indicate an imminently hazardous situation which, if not avoided, will result in death or serious personal injury.

These symbols are added throughout the document to ensure all users' personal safety and to avoid unintentional damage to the equipment or connected devices.

Please note that although these warnings relate to direct damage to personnel and/or equipment, it should be understood that operating damaged equipment may also lead to further, indirect damage to personnel and/or equipment. Therefore, we expect any user to fully comply with these special messages.

3 Abbreviations

AQD	– arc quenching device
BI	– binary input
BO	– binary output
CB	– circuit breaker
CBFP	– circuit breaker failure protection
CT	– current transformer
EPROM	– erasable, programmable read-only memory
HSO	– high-speed output
LED	– light emitting diode
LV	– low-voltage
MV	– medium-voltage
NC	– normally closed
NO	– normally open
PCB	– printed circuit board
RF	– radio frequency
Rx	– receiver
SAS	– standard arc scheme
SF	– system failure
Tx	– transceiver
μP	- microprocessor

4 General

The AQ-110PLV is a sophisticated microprocessor-based arc flash protection device with point sensor channels and an optional fiber loop sensor channel. The device is designed to minimize the damage caused by an arc fault. This is done by tripping the circuit breaker which supplies current to the fault when sensors detect arc light.

The device has three phase current measurement channels. Rogowski coil current measurement inputs are also available as an ordering option. Fault current detection can be used as an additional trip criterion to confirm arc faults detected by light sensors.

The device includes a complete system self-supervision functionality which provides the highest level of dependability as it continuously monitors all internal system functions as well as all external connections.

The device can be ordered with an optional serial Modbus communication module, which can be used for receiving status reports from the device.

Figure. 4 - 1. Arc protection device AQ-110PLV.



The AQ-110PLV is designed according to the latest protection relay standards and is therefore suitable for installations in rough environments. These include utilities and power plants (both traditional and renewable), various heavy industry applications (off-shore, marine, oil, gas, mining, steel, etc.) as well as commercial and institutional electrical systems. While the device is suitable for MV use, it is designed for LV switchgears and for motor control center applications in both new and retrofitted installations.

5 Device features

AQ-110PLV is an arc flash protection device which can be applied to a variety of applications. The device can be used on their its own as a stand-alone device, or as a part of a more complex arc protection system by using binary inputs and outputs to connect multiple AQ 100 series devices together.

The following list presents the main features of the AQ-110PLV device:

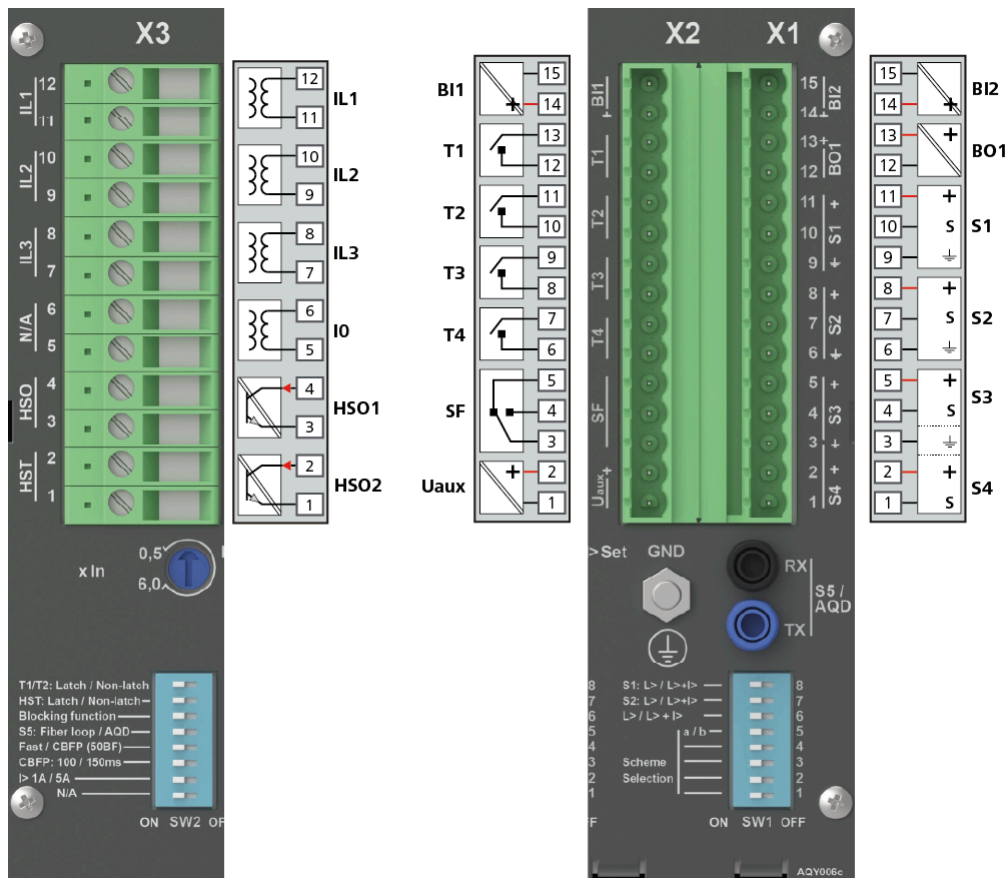
- 92...265 V AC/DC auxiliary power supply or 18...72 V DC auxiliary power supply
- three (3) phase current inputs, either with standard CT inputs or with Rogowski inputs
- one (1) trimmer for configuring overcurrent function trip level
- four (4) arc flash point sensor channels, max. three (3) point sensors per channel
- one (1) fiber loop sensor channel for arc flash detection or arc quenching device control (optional)
- two (2) binary inputs
- two (2) high-speed semiconductor outputs (HSO)
- four (4) trip relays
- one (1) binary output
- one (1) system failure relay (change-over)
- nineteen (19) indication LEDs
- sixteen (16) DIP switches for logic configuration
- one (1) multifunction push button.

6 Connections

AQ-110PLV with standard CT inputs.

The figure below depicts the connections of AQ-110PLV with standard current inputs. Please note that the SF relay is in the de-energized position; also note that the device has been halved for the image to allow for space for all connector descriptions.

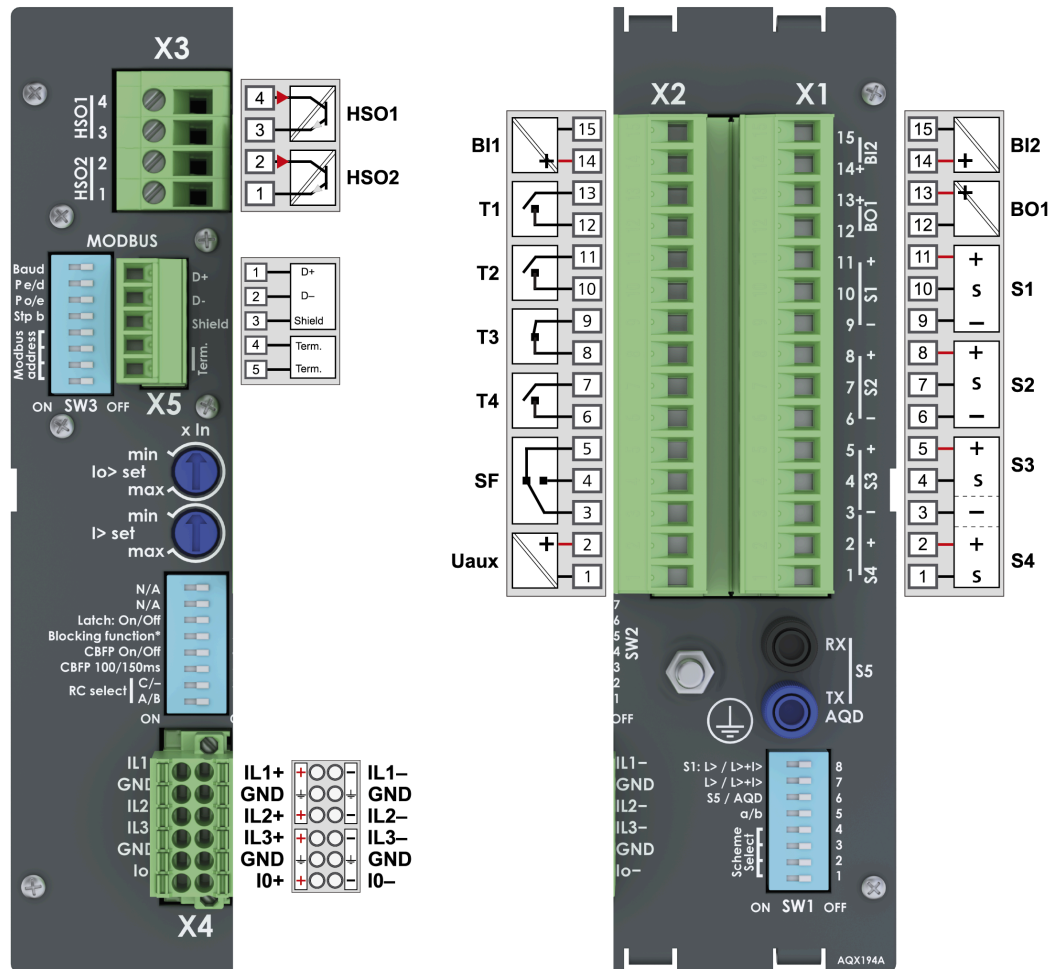
Figure. 6 - 2. Rear terminals of AQ-110PLV.



AQ-110PLV with Rogowski inputs.

The figure below depicts the connections of AQ-110PLV with Rogowski current inputs. Please note that the SF relay is in the de-energized position; also note that the device has been halved for the image to allow for space for all connector descriptions.

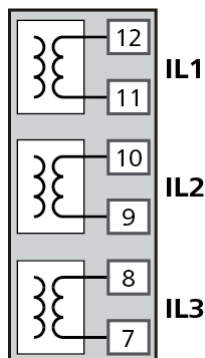
Figure. 6 - 3. Rear terminals of AQ-110PLV with Rogowski inputs and optional Modbus add-on.



6.1 Inputs

6.1.1 Current transformer measurement inputs

Figure. 6.1.1 - 4. Current measurement connections.



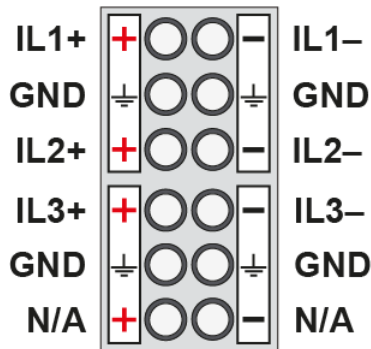
This device has three (3) CT inputs for measuring the three phase currents. The phase current inputs can be configured to a nominal current of 1 A or 5 A with the DIP switches (for more information, please refer to the [DIP switch settings](#) chapter).

The [Current threshold settings](#) chapter describes the setting of current threshold levels in more detail.

This device includes a current transformer supervision function. See the [System self-supervision](#) chapter for more information.

6.1.2 Rogowski coil measurement inputs

Figure. 6.1.2 - 5. Rogowski coil current measurement connections.

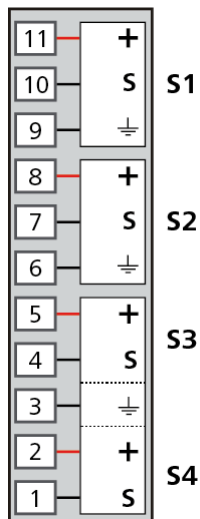


This device can be ordered with three (3) Rogowski coil current inputs for measuring the three phase currents. With the DIP switches the RC selection can be set to OFF or one of following three levels: 22.5 mV/kA, 100 mV/kA, or 333 mV/kA. For more information on the DIP switches, please refer to the [DIP switch settings](#) chapter.

This device includes a current transformer supervision function. See the [System self-supervision](#) chapter for more information.

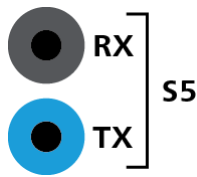
6.1.3 Arc sensor channels

Figure. 6.1.3 - 6. Arc point sensor connections.



The device has four (4) arc point sensor channels: S1, S2, S3 and S4. Up to three (3) arc point sensors can be connected to each channel. When the arc protection system has been set up, point sensor connections are constantly monitored. In case of sensor fault or disconnection, the device will go into Error mode. See the [System self-supervision](#) chapter for more information.

Figure. 6.1.3 - 7. Optional fiber loop channel connection.



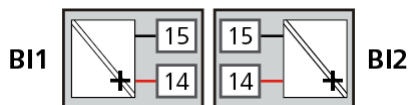
S5 is the optional fiber loop sensor channel with a transmitter (Tx) terminal and a receiver (Rx) terminal. When S5 is configured as a fiber loop arc sensor channel, one of its ends are connected to "Tx" and the other to "Rx". This sensor loop is then continuously monitored by test light pulses that are sent by the "Tx" channel. If a discontinuity is detected, the device goes into Error mode. See the [System self-supervision](#) chapter for more information.

Alternatively, S5 can be configured to control an arc quenching device (AQD). Device sends a test light pulse continuously to the arc quenching device to supervise the fiber connection. If the arc quenching device doesn't receive the test pulses the device will go into Error mode. The function of S5 is controlled with the DIP switches (please refer to the [DIP switch settings](#) chapter for more information).

For more information on sensors, please refer to the [Arc sensors](#) chapter.

6.1.4 Binary inputs

Figure. 6.1.4 - 8. Binary input connections.



This device has two (2) binary inputs. Typically, the binary inputs are used for receiving arc light signals, master trip commands or overcurrent signals from other AQ 100 series devices. Function of binary inputs are configured using DIP switches. For more information, please refer to the [DIP switch settings](#) chapter.

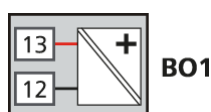
The nominal voltage level of the binary inputs for this device is 24 VDC. Please note that the actual activation threshold of the binary input is at a lower voltage than the specified nominal voltage value (see the [Technical Data](#) chapter).

AQ 100 series devices are capable of monitoring health of wiring between binary inputs and binary outputs of other AQ 100 series devices in the system. If a binary input loses connection to any of the configured binary outputs, the device will go into Error mode. See the [System self-supervision](#) chapter for more information.

6.2 Outputs

6.2.1 Binary outputs

Figure. 6.2.1 - 9. Binary output connection.



The device has one (1) binary output: BO1. This binary output is used for sending overcurrent, light detection, master trip and other signals to other AQ 100 series devices in the system. The binary output function can be configured with the DIP switches. For more information on the configuration, please refer to the [DIP switch settings](#) chapter.

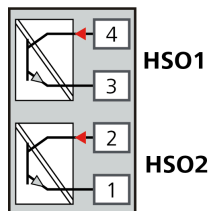
AQ 100 series binary outputs have an internal 24 VDC power supply. Binary outputs generate a short test pulse every second. Binary inputs of the receiving AQ 100 series devices use these pulses to count the number of connected binary outputs and supervise the I/O connection. See the [System self-supervision](#) chapter for more information.

**NOTICE!**

Binary output is polarity-sensitive.

6.2.2 High-speed output(s)

Figure. 6.2.2 - 10. The high-speed output's direction of rotation.



The device has two (2) high-speed semiconductor outputs, namely HSO1 and HSO2. These outputs can be used as heavy-duty signaling outputs. Due to their high current-carrying capacity, HSO1 and HSO2 can send overcurrent, light or master trip signals to a maximum of twenty (20) pieces of AQ 100 series devices without a need for signal amplifiers. The operation of these high-speed outputs depends on the DIP switch settings (for more information, please refer to the [DIP switch settings](#) chapter).

High-speed outputs generate a short test pulse every second. Binary inputs of the receiving AQ 100 series devices use these pulses to count the number of connected high-speed outputs and supervise the I/O connection. See the [System self-supervision](#) chapter for more information.

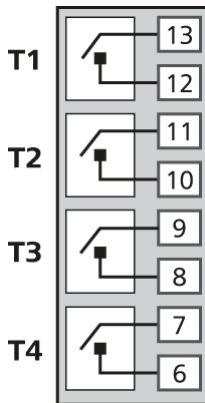
The output's direction of rotation is as follows: the signal goes in the even pin and out from the odd pin (see the image above).

**NOTICE!**

The high-speed outputs are polarity-sensitive.

6.2.3 Trip relays

Figure. 6.2.3 - 11. Trip relay connections



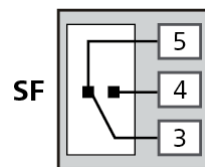
This device has four (4) normally open trip relays. Trip relays T1, T2 and T3 are generally used for tripping circuit breakers. T4 is generally used for tripping one additional disconnecting device, or as a trip alarm (local or remote) monitoring and alarming system.

T3 can alternatively be ordered as a normally closed relay (electronic lock-out relay). Once opened by fault detection it holds its open position until it receives a manual reset command or until auxiliary power supply is lost. When re-applying the auxiliary power supply, the electronic lock-out relay returns to the same position it had prior to the power loss. This normally closed relay can also be used for tripping contactor-controlled devices.

T3 and T4 are always latching relays. Trip relays T1 and T2 can be set as latching relays with a DIP switch setting (for more information, please refer to the [DIP switch settings](#) chapter).

6.2.4 System failure relay

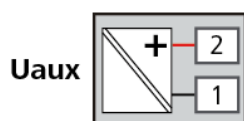
Figure. 6.2.4 - 12. System failure relay connection (de-energized position)



The system failure (SF) relay is of the change-over type (NO/NC) and it is energized when the device is in a healthy condition and powered on. Whenever the device detects a system error or the auxiliary power supply is disconnected, the SF relay changes its state. The state stays this way until the device returns to a healthy condition. See the [System self-supervision](#) chapter for more information.

6.3 Auxiliary voltage

Figure. 6.3 - 13. Auxiliary power supply connection



The auxiliary power supply voltage is 92...265 V AC/DC. Alternatively, the auxiliary power supply can be of 18...72 V DC. This choice must be specified when ordering.

7 Arc sensors

The AQ 100 series supports arc sensing point sensors and fiber optic loop sensors. These sensors can be used with different devices and different switchgear types according to specific application requirements.

Point sensors are typically installed in metal-clad compartments, and they provide a quick and accurate location of the fault area. Fiber loops typically cover a wider protected area with one fiber, when there is no need to pinpoint the exact location of a fault.

7.1 Arc light point sensor AQ-01

AQ-01 is a point sensor with a light-sensitive photodiode element activated by arc light. Its light detection radius is 180 degrees. The default light intensity threshold for an AQ-01 sensor is 8,000 lux. Depending on the demand of the application, light point sensors can be ordered with 25,000 lux or 50,000 lux thresholds.

Figure. 7.1 - 14. The AQ-01 arc light point sensor.



The AQ-01 sensors should be mounted in the switchgear cubicles in such a way that the light-sensitive part covers the protected area as completely as possible. In most cases one sensor per closed metal-clad compartment is sufficient. In open spaces (such as a busbar section) the sensors should be mounted no more than two (2) meters apart.

An AQ-01 is installed either inside or outside the compartment wall. When mounting inside the wall, the sensor is placed on the wall with the colored side against the wall. When mounting outside the wall the sensor is placed on the wall with the grey side against the wall and the eye is pushed into the drilled compartment hole. No external mounting plates are needed regardless of the mounting type. However, you can use mounting brackets, such as Arcteq's sensor bracket accessory, for installation. See the [Using the sensor bracket](#) chapter for more information.

Up to three (3) sensors can be connected in series per channel, with the exception of AQ-103 which can handle only one point sensor per channel. Installing a connection cable is simple as each end of the sensor has a detachable cover over the cable connectors. Reattach the cover once the wires have been installed. See the [Wiring of point sensors](#) chapter for more information.



NOTICE!

The AQ-01 point sensor does not come with a connection cable!

7.2 Arc light and pressure point sensor AQ-02

AQ-02 is an arc light and pressure point sensor that comes with arc light detection and ambient pressure detection. AQ-02 point sensor activates when both light and pressure are detected. The default light intensity threshold for an AQ-02 sensor is 8,000 lux. Depending on the demand of the application, AQ-02 can also be ordered with 25,000 lux or 50,000 lux thresholds. Its light detection radius is 180 degrees. The pressure threshold is fixed at 0.2 bar above ambient pressure.

Figure. 7.2 - 15. AQ-02 arc light and pressure point sensor.



The AQ-02 sensors should be mounted in the switchgear cubicles in such a way that the light-sensitive part covers the protected area as completely as possible. In most cases one sensor per closed metal-clad compartment is sufficient. The AQ-02 sensors cannot be installed in open spaces.

An AQ-02 can only be installed inside the compartment wall as not to block pressure detection located next to "the eye". The sensor is placed on the wall (with the colored side against the wall), and then fixed to the wall with two screws. No external mounting plates are needed regardless of the mounting type. However, you can use mounting brackets, such as Arcteq's sensor bracket accessory, for installation. See the [Using the sensor bracket](#) chapter for more information.

Up to three (3) sensors can be connected in series (with the exception of AQ-103 which can take only one point sensor per channel). Installing a connection cable is simple as each end of the sensor has a detachable cover over the cable connectors. Please remember to reattach the cover once the wires have been installed. See the [Wiring of point sensors](#) chapter for more information.



NOTICE!

The AQ-02 point sensor does not come with a connection cable!

7.3 Arc light fiber optic loop sensor AQ-06

AQ-06 is an arc light fiber optic loop sensor, which is a plastic fiber optic cable. Fiber sensors are distributed through the protected switchgear cells. The light intensity threshold of an AQ-06 sensor is 8,000 lux. The sensor's detection radius is 360 degrees.

AQ-06 sensors can be ordered in pre-manufactured lengths of 3...40 meters (3 m, 5 m, 10 m, 15 m, 20 m, 25 m, 30 m, 35 m, 40 m).

7.4 Arc light fiber optic loop sensor AQ-07

AQ-07 is an arc light fiber optic loop sensor, which is a robust fiber optic cable with a practically unlimited bending radius. The sensor contains hundreds of glass fiber drains covered by a plastic tube, thus making it extremely strong and durable. Fiber sensors are distributed through the protected switchgear cells.

AQ-07 sensors can be ordered in pre-manufactured lengths of 3...50 meters (3 m, 5 m, 10 m, 15 m, 20 m, 25 m, 30 m, 35 m, 40 m, 45 m, 50 m).

The light intensity threshold of an AQ-07 sensor is 8,000 lux. The sensor's detection radius is 360 degrees.

If necessary, the ends of an AQ-07 cable can be ordered with heat shrinking tubing to avoid light detection outside the protected zone. The covered area can be one (1) or two (2) meters by default; if other lengths are required, please consult the Arcteq sales team. You can find the [Contact and reference information](#) chapter at the end of this manual.

7.5 Arc light fiber optic loop sensor AQ-08

AQ-08 is an arc light fiber optic loop sensor. It is designed to withstand temperatures up to 125 °C, which makes it suitable for e.g. wind turbine windings. AQ-08 is a robust fiber optic cable with a practically unlimited bending radius. The sensor contains hundreds of glass fiber drains that are covered by a plastic tube, thus making it extremely strong and durable. Fiber sensors are distributed through the protected switchgear cells.

AQ-08 sensors can be ordered in pre-manufactured lengths of 3...15 meters (3 m, 5 m, 10 m, 15 m).

The light intensity threshold of an AQ-08 sensor is 8,000 lux. The sensor's detection radius is 360 degrees.

7.6 Sensor dependencies

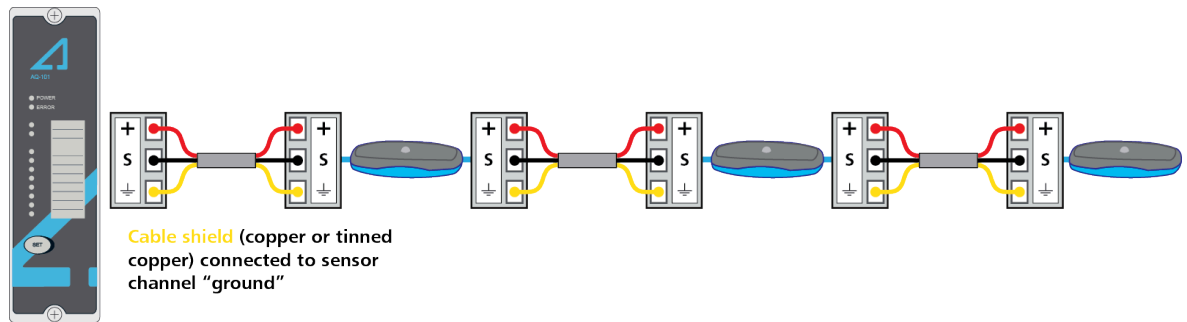
Compatibility of arc sensor types depend on the hardware available in the AQ 100 series device. The table below describes those dependencies.

Table. 7.6 - 3. Sensor dependencies.

	Point sensors (AQ-01 & AQ-02)	Fiber loops (AQ-06, AQ-07 & AQ-08)
AQ-101LV	Yes	Order option
AQ-101DLV	Yes	Order option
AQ-102LV	No	Yes
AQ-103LV	Yes	Order option
AQ-110PLV	Yes	Order option
AQ-110FLV	No	Yes

7.7 Wiring of point sensors

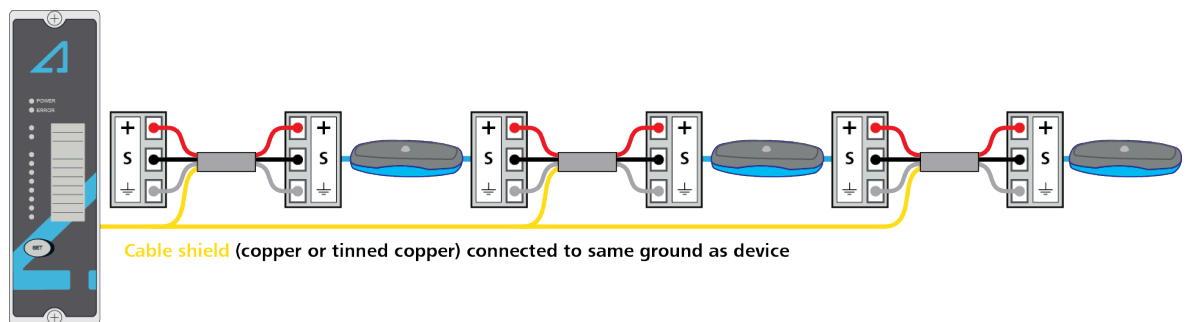
Figure. 7.7 - 16. Point sensor connection with a two-wire cable.



WARNING!

Only connect the cable shield to the "ground" connector of the point sensor channel. **Do not connect** the cable shield to the same earth as the device!

Figure. 7.7 - 17. Point sensor connection with a three-wire cable.



NOTICE!

If the cable has a shield (copper or tinned copper), it is recommended to connect it to same ground as the device.

1. Open the sensor covers and detach the connectors.
2. Attach the cable to the connector and to the arc protection device.
3. Reattach the connectors to the sensor.
4. Run the auto-configuration procedure. See the [System setup](#) chapter in the device manual for further details).

7.8 Using the sensor bracket



WARNING!

An AQ-01 light sensor can be installed both inside and outside the compartment wall, whereas an AQ-02 light and pressure sensor can only be installed inside the compartment wall!

Arcteq offers a plastic sensor bracket for easier installation of point sensors to compartment walls.

When using the sensor bracket, begin by situating the bracket correctly with regards to the arc-protected space. An AQ-01 light sensor can be installed both inside and outside the compartment wall: the sensor's eye can be towards the bracket (the first figure below) or facing away from the bracket (the second figure below). However, an AQ-02 light and pressure sensor can only be installed inside the compartment wall with the sensor's eye facing away from the bracket.

To install a point sensor with the sensor bracket, screw the bracket in place by the two holes on the side and then snap the point sensor in the bracket hooks.

Figure. 7.8 - 18. Installing a point sensor outside the wall, with the eye towards the bracket.

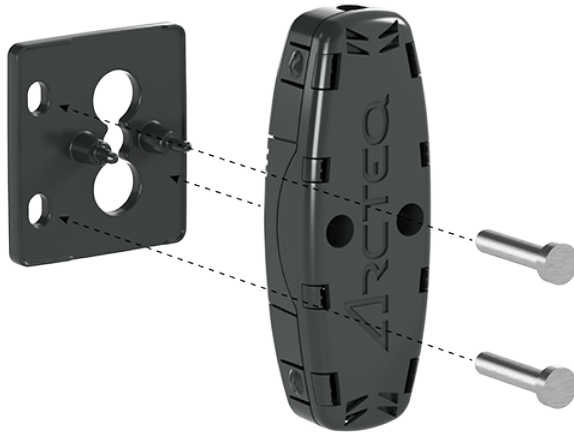
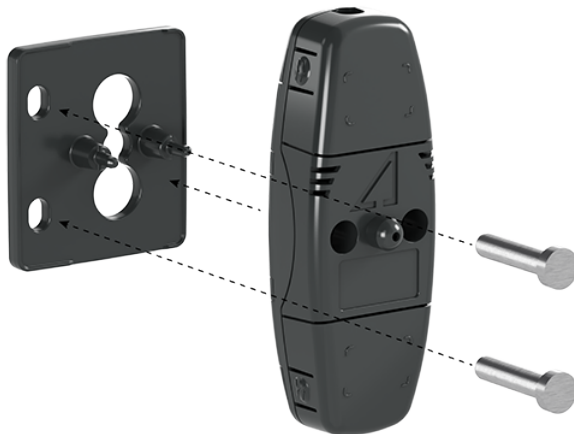


Figure. 7.8 - 19. Installing a point sensor inside the wall, with the eye facing away from the bracket.



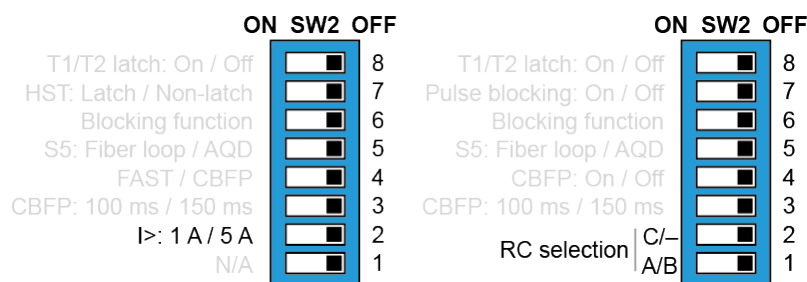
8 Operation and configuration

8.1 Current threshold settings

The AQ-110xLV devices have three (3) phase current measurement inputs. The phase current measurements can be used as additional trip criteria in an arc protection system to avoid trips caused by natural light sources. When an arc sensor channel has been set to "Light and overcurrent" mode, overcurrent and light must be detected simultaneously for the device to trip.

Depending on the selected logic scheme the device can also send overcurrent indication signals with binary outputs or high-speed outputs to other AQ 100 series devices in the system.

Figure. 8.1 - 20. Current measurement DIP switches.



DIP switch SW2:2 can be used for selecting either 1 A or 5 A nominal current or A/B/C type when Rogowski coils are used. The set points are set by using the trimmer (see the image below). The threshold for phase overcurrent is typically set to 50 % above the highest load current. You can get an accurate setting by injecting the desired set current into the phase current inputs of the device and by adjusting the trimmer until the phase current indicator LEDs are lit.

Figure. 8.1 - 21. Overcurrent setting trimmer.



8.2 DIP switch settings

Configuration of the operation logic and other functionalities are done with DIP switches. The DIP switches are located at the back of the device.

Main operation logic can be defined with "Scheme selection" DIP switches. Logic schemes are described in the [Logic schemes](#) chapter.

Tripping can be set with DIP switches to require either just arc light ("Light only" mode) or both arc light and overcurrent simultaneously ("Light and current" mode). Adding overcurrent criteria ensures the device trips when an arc fault occurs but not when a strong natural light source hits the light sensor (e.g. sunlight). Device can detect overcurrent by measuring phase currents and residual current or by receiving overcurrent signal from external devices (mainly other AQ 100 series devices) which are connected to a binary input.

CBFP (circuit breaker failure protection) function can be enabled with "Fast / CBFP" DIP switch. CBFP time delay can be set with "100 ms / 150 ms" DIP switch. CBFP logic depends on the selected logic scheme. See the [Circuit breaker failure protection](#) chapter for more information.

If the device has been ordered with the optional Modbus module, the Modbus address is selected with DIP switches.

**NOTICE!**

The T3 and T4 trip relays are always latching.

DIP switches in devices with CT inputs

Figure. 8.2 - 22. DIP switch diagram for AQ-110PLV with CT inputs.

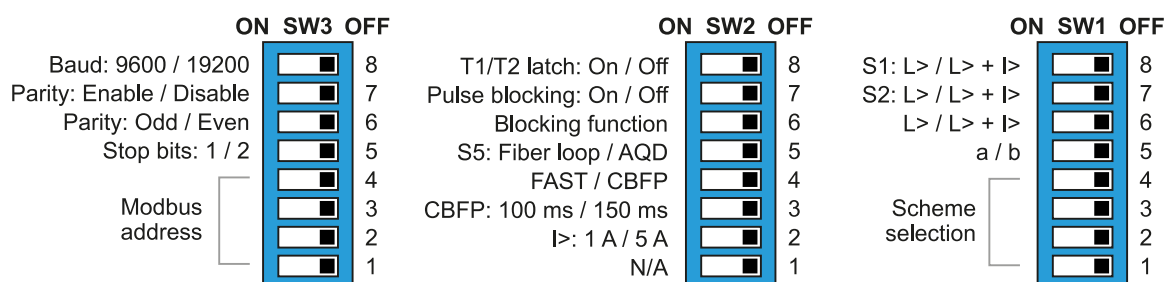


Table. 8.2 - 4. DIP switch settings for the SW1 group.

Switch	Function selection	ON (left position)	OFF (right position)
8	The tripping criterion for the S1 sensor channel.	Tripping on light only (L>).	Light detection only trips if overcurrent is also detected at the same time (L> + I>)
7	The tripping criterion for the S2 sensor channel.		
6	The tripping criterion for the S3 and S4 and S5 channels.		
5	Selects the logic scheme. Please refer to the Logic schemes chapter.	Switch 1: 1	Switch 1: 0
4-1		Switch 2: 2 Switch 3: 4 Switch 4: 8 Switch 5: a	Switch 2: 0 Switch 3: 0 Switch 4: 0 Switch 5: b

Table. 8.2 - 5. DIP switch settings for the SW2 group in devices with CT inputs.

Switch	Function selection	ON (left position)	OFF (right position)
8	Enables or disables trips latching.	Trips operate as latching relays.	Trip latching is disabled.
7	Enables or disables pulse blocking.	Pulse blocking in enabled.	Pulse blocking is disabled.

Switch	Function selection	ON (left position)	OFF (right position)
6	Selects the function of a binary input.	The blocking function is selected.	A specific signal is selected. The signal is scheme-dependent, and can be either an external current signal or an external light signal.
5	The selection between the fiber loop function and the arc quenching device (AQD) control.	The S5 fiber sensor channel operates as the fiber loop sensor function.	The S5 fiber sensor channel operates as the arc quenching device (AQD) control. The Tx terminal of S5 sends a test pulse signal to the quenching system.
5	<i>(Reserved for future use.)</i>	—	—
4	Enable or disable CBFP function. Depending on the selected scheme, some outputs activate after a time delay if the fault is not cleared on time. This DIP switch can be used to change the behavior of CBFP signals.	Depending on the selected scheme, CBFP signals are either disabled, unaffected or changed into instant signals.	CBFP signals are used.
3	The setting for the CBFP time.	The CBFP time is set to 100 ms.	The CBFP time is set to 150 ms.
2	The nominal current selection for the phase currents IL1, IL2 and IL3.	The nominal current is 1 A.	The nominal current is 5 A.
1	<i>(Reserved for future use.)</i>	—	—

Table. 8.2 - 6. DIP switch settings for the SW3 group in devices with Modbus.

Switch	Function selection	ON (left position)	OFF (right position)
8	Selects the baud rate used by Modbus.	The baud rate is 9600.	The baud rate is 19200.
7	Selects whether the parity bit is enabled or not.	The parity bit is enabled.	The parity bit is disabled.
6	Selects whether the parity makes the string's total number odd or even.	The total number is odd.	The total number is even.
5	Selects the number of stop bits used to indicate the end of data transmission.	One (1) stop bit is used.	Two (2) stop bits are used.
4-1	Defines the Modbus address. The address always begins with 20. For example, when Pin 1 is in the left position (ON), the address is "21". When switch 4 is ON, the address is "28".	Switch 1: 1 Switch 2: 2 Switch 3: 4 Switch 4: 8	Switch 1: 0 Switch 2: 0 Switch 3: 0 Switch 4: 0

DIP switches in devices with Rogowski inputs

Figure. 8.2 - 23. DIP switch diagram for AQ-110PLV with Rogowski inputs.

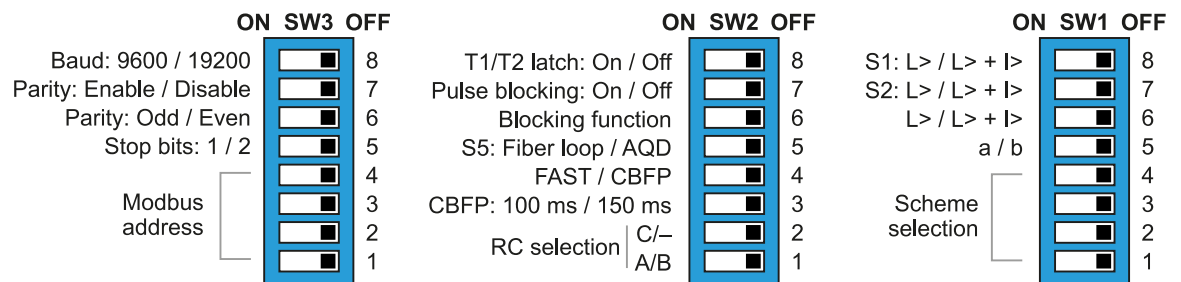


Table. 8.2 - 7. DIP switch settings for the SW1 group.

Switch	Function selection	ON (left position)	OFF (right position)
8	The tripping criterion for the S1 sensor channel.	Tripping on light only (L>).	Light detection only trips if overcurrent is also detected at the same time (L> + I>)
7	The tripping criterion for the S2 sensor channel.		
6	The tripping criterion for the S3 and S4 and S5 channels.		
5	Selects the logic scheme. Please refer to the Logic schemes chapter.	Switch 1: 1	Switch 1: 0
4-1		Switch 2: 2 Switch 3: 4 Switch 4: 8 Switch 5: a	Switch 2: 0 Switch 3: 0 Switch 4: 0 Switch 5: b

Table. 8.2 - 8. DIP switch settings for the SW2 group in devices with Rogowski inputs.

Switch	Function selection	ON (left position)	OFF (right position)
8	Enables or disables T1 and T2 latching.	T1 and T2 operate as latching relays.	T1 and T2 latching is disabled.
7	Enables or disables high-speed output and binary output test pulses.	Test pulses are blocked.	Test pulses are in use.
6	Selects the function of a binary input.	The blocking function is selected.	A specific signal is selected. The signal is scheme-dependent, and can be either an external current signal or an external light signal.
5	The selection between the fiber loop function and the arc quenching device (AQD) control.	The S5 fiber sensor channel operates as the fiber loop sensor function.	The S5 fiber sensor channel operates as the arc quenching device (AQD) control. The Tx terminal of S5 sends a test pulse signal to the quenching system.

Switch	Function selection	ON (left position)	OFF (right position)
4	Enable or disable CBFP function. Depending on the selected scheme, some outputs activate after a time delay if the fault is not cleared on time. This DIP switch can be used to change the behavior of CBFP signals.	Depending on the selected scheme, CBFP signals are either disabled, unaffected or changed into instant signals.	CBFP signals are used.
3	The setting for the CBFP time.	The CBFP time is set to 100 ms.	The CBFP time is set to 150 ms.
2	The RC selection for the Rogowski current inputs.	The RC selection is 333 mV/kA.	No RC selection.
1		The RC selection 22.5 mV/kA.	The RC selection is 100 mV/kA.

Table. 8.2 - 9. DIP switch settings for the SW3 group in devices with Modbus.

Switch	Function selection	ON (left position)	OFF (right position)
8	Selects the baud rate used by Modbus.	The baud rate is 9600.	The baud rate is 19200.
7	Selects whether the parity bit is enabled or not.	The parity bit is enabled.	The parity bit is disabled.
6	Selects whether the parity makes the string's total number odd or even.	The total number is odd.	The total number is even.
5	Selects the number of stop bits used to indicate the end of data transmission.	One (1) stop bit is used.	Two (2) stop bits are used.
4-1	Defines the Modbus address. The address always begins with 20. For example, when Pin 1 is in the left position (ON), the address is "21". When switch 4 is ON, the address is "28".	Switch 1: 1 Switch 2: 2 Switch 3: 4 Switch 4: 8	Switch 1: 0 Switch 2: 0 Switch 3: 0 Switch 4: 0



NOTICE!

The T3 and T4 trip relays are always latching. The BO1 binary output function is never latching.

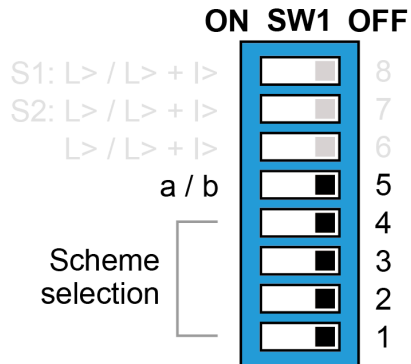
8.3 Logic schemes

The schemes described below are the most commonly used ones for this device. However, additional schemes are also available; please contact your nearest Arcteq representative for more information on those schemes. The schemes are configured using the first DIP switch group (SW1) and its switches numbered 1...4 ("Scheme selection") and 5 ("a or b"). The scheme selection is based on binary arithmetic:

- Switch 1: 1
- Switch 2: 2

- Switch 3: 4
- Switch 4: 8
- Switch 5: a or b

Figure. 8.3 - 24. DIP switches used for selecting the logic scheme.

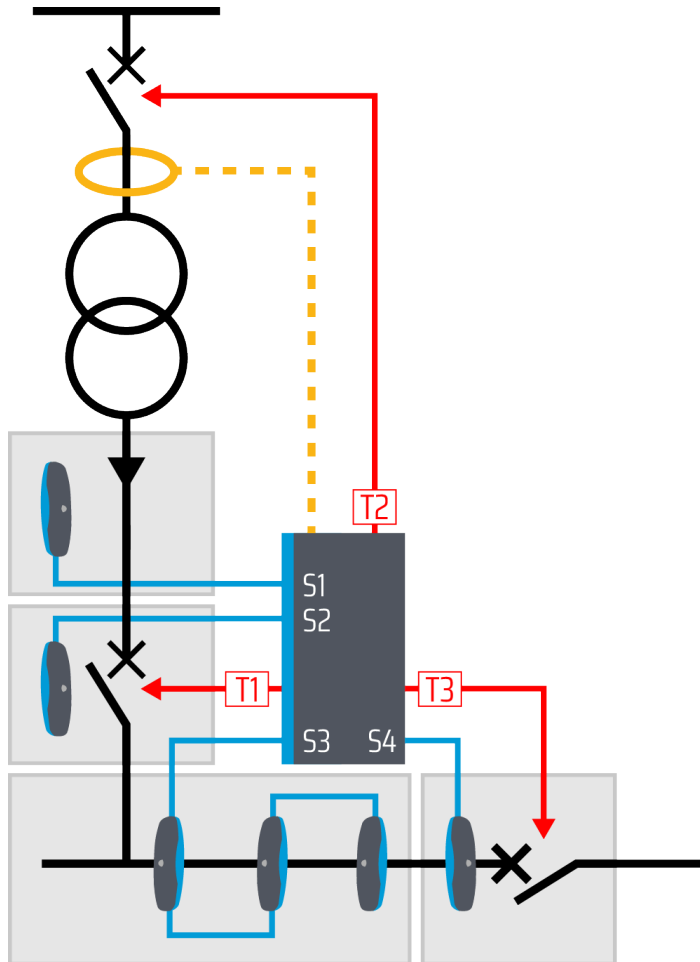


AQ 100 series arc protection devices can be used as a stand-alone device or as a part of a more complex arc protection system with multiple AQ 100 series devices. The most convenient way to set the device to a more complex arc protection system is to use Standard Arc Schemes (SAS). For detailed instructions on each of the available Standard Arc Schemes please refer to the AQ-SAS™ booklet (can be found at arcteq.com/downloads).

8.3.1 SS:0a

The logic scheme SS:0a is designed for selective incoming feeder arc protection. It can be used for substations with one or more incoming feeders.

Figure. 8.3.1 - 25. SS:0a example application.



If a fault is detected in the incoming feeder cable compartment (S1), circuit breakers on both sides of the transformer will be tripped with T1 and T2. If the fault is not cleared on time, T3 will trip the tie breaker (if applicable) and HSO2 sends master trip signal to the outgoing feeder protection devices after the CBFP time delay has passed.

If a fault is detected in the incoming feeder circuit breaker compartment (S2), circuit breakers on both sides of the transformer (T1-T2), tie breaker (T3) and all outgoing feeders (HSO2) will be tripped. If a fault is detected in the busbar compartment (S3) or in the tie breaker compartment (S4) the incoming feeder (T1), tie breaker (T3) and all outgoing feeders (HSO2) will be tripped. If the fault is not cleared on time, T2 will trip the incoming feeder HV side circuit breaker after the CBFP time delay has passed.

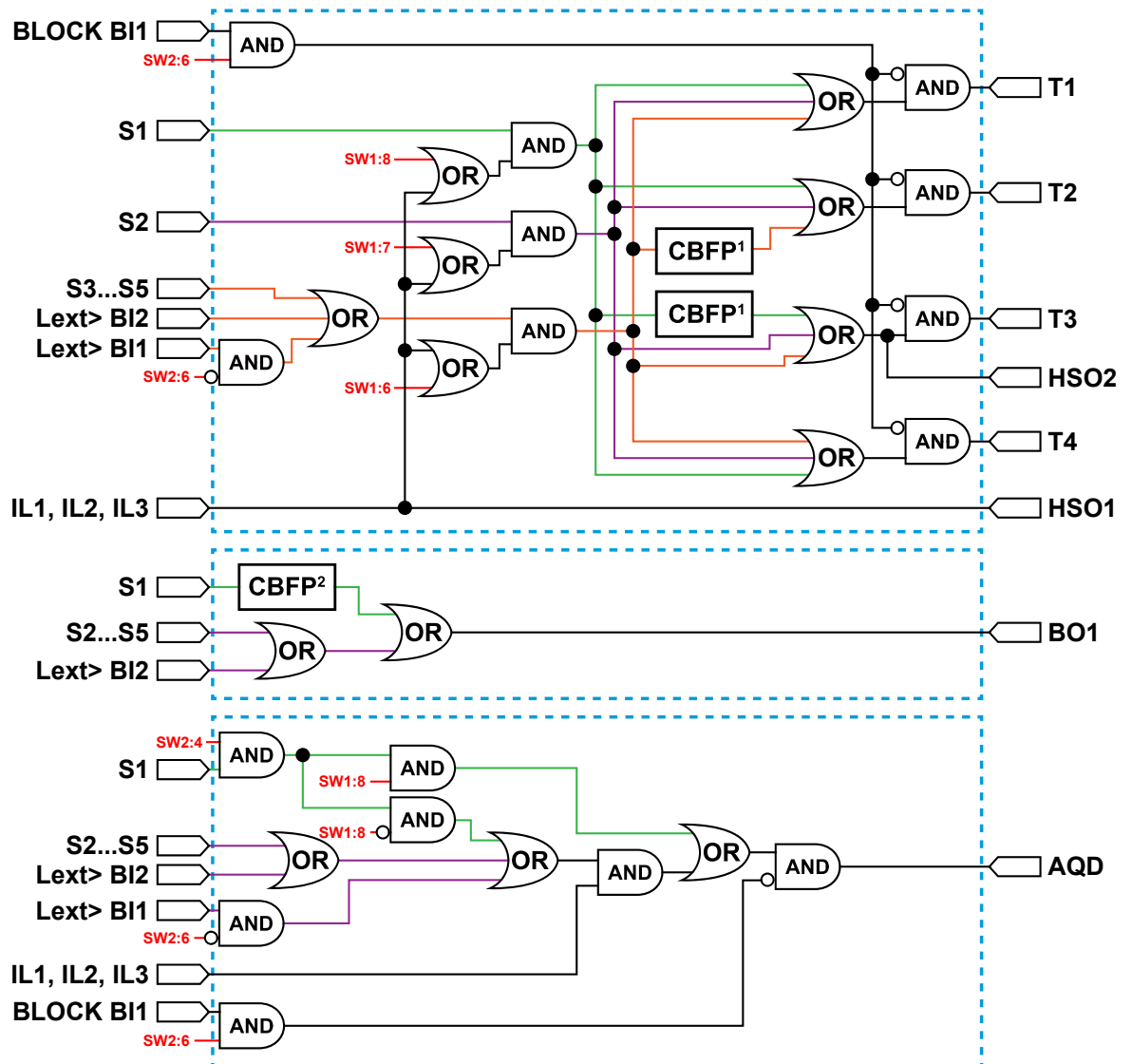
HSO1 can be used for sending overcurrent detection signal to protection devices installed to outgoing feeders.

Figure. 8.3.1 - 26. Logic matrix of SS:0a.

SS:0a		OUTPUTS							
		T1	T2	T3	T4	HSO1	HSO2	BO1	AQD
INPUTS	S1	x ¹	x ¹	CBFP ¹	x ¹		CBFP ¹	x ²	x ³
	S2	x ¹	x ¹	x ¹	x ¹		x ¹	x	x ⁴
	S3, S4, S5	x ¹	CBFP ¹	x ¹	x ¹		x ¹	x	x ⁴
	Lext> AQ-110 (BI1)	x ¹	CBFP ¹	x ¹	x ¹		x ¹		x ⁴
	Lext> AQ-101 (BI2)	x ¹	CBFP ¹	x ¹	x ¹		x ¹	x	x ⁴
	I> Overcurrent					x			

1. Activates only if channel is set to light only mode or if overcurrent signal (I>) is ON.
2. If "Fast / CBFP" DIP switch is set to CBFP mode, channel must be set to light only mode or overcurrent signal (I>) must be active for output activation to occur. If "Fast /CBFP" DIP switch is set to FAST mode, no current signal is required.
3. Activates only when "Fast / CBFP" DIP switch is set to FAST mode. When channel is set to light only mode, current detection is not required for activation.
4. Activates only if overcurrent signal (I>) is ON.

Figure. 8.3.1 - 27. Simplified logic diagram of SS:0a.

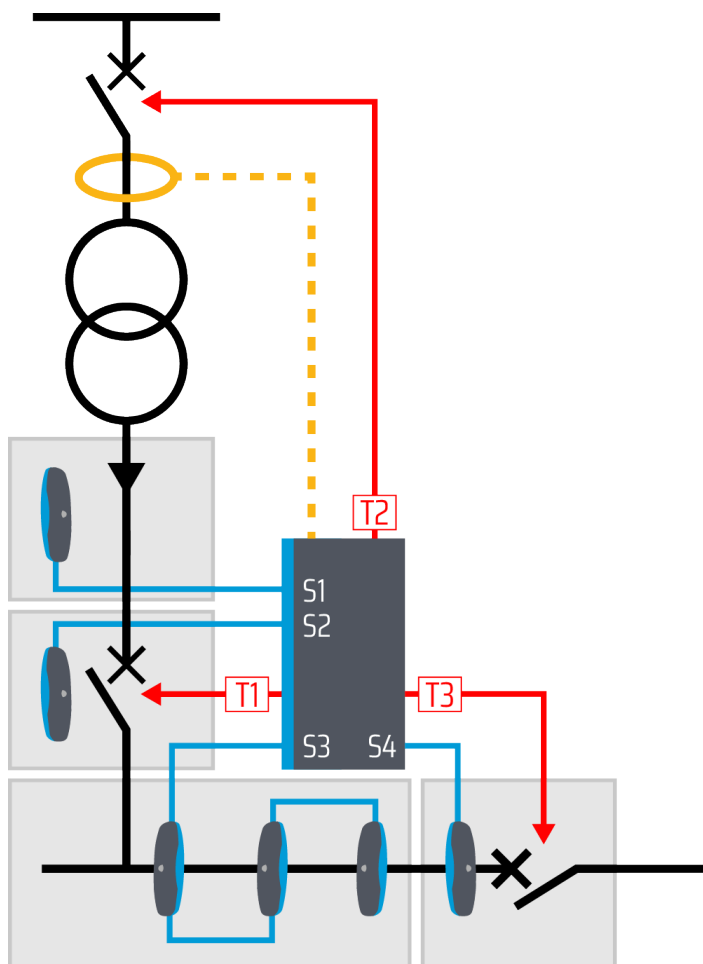


- 1) CBFP signals are activated instantly if "Fast /CBFP" DIP switch is set to FAST mode.
- 2) If "Fast /CBFP" DIP switch is set to CBFP mode, channel must be set to light only mode or overcurrent signal (I_>) must be active for output activation to occur. If "Fast /CBFP" DIP switch is set to FAST mode, no current signal is required.

8.3.2 SS:0b

The logic scheme SS:0b is designed for selective incoming feeder arc protection. It can be used for substations with one or more incoming feeders. This scheme is a modification of 0a. In this scheme BI1 is used for receiving overcurrent signals AQ-110 devices installed to other incoming feeders.

Figure. 8.3.2 - 28. SS:0b example application.



If a fault is detected in the incoming feeder cable compartment (S1), circuit breakers on both sides of the transformer will be tripped with T1 and T2. If the fault is not cleared on time, T3 will trip the tie breaker (if applicable) and HSO2 sends master trip signal to the outgoing feeder protection devices after the CBFP time delay has passed.

If a fault is detected in the incoming feeder circuit breaker compartment (S2), circuit breakers on both sides of the transformer (T1-T2), tie breaker (T3) and all outgoing feeders (HSO2) will be tripped. If a fault is detected in the busbar compartment (S3) or in the tie breaker compartment (S4) the incoming feeder (T1), tie breaker (T3) and all outgoing feeders (HSO2) will be tripped. If the fault is not cleared on time, T2 will trip the incoming feeder HV side circuit breaker after the CBFP time delay has passed.

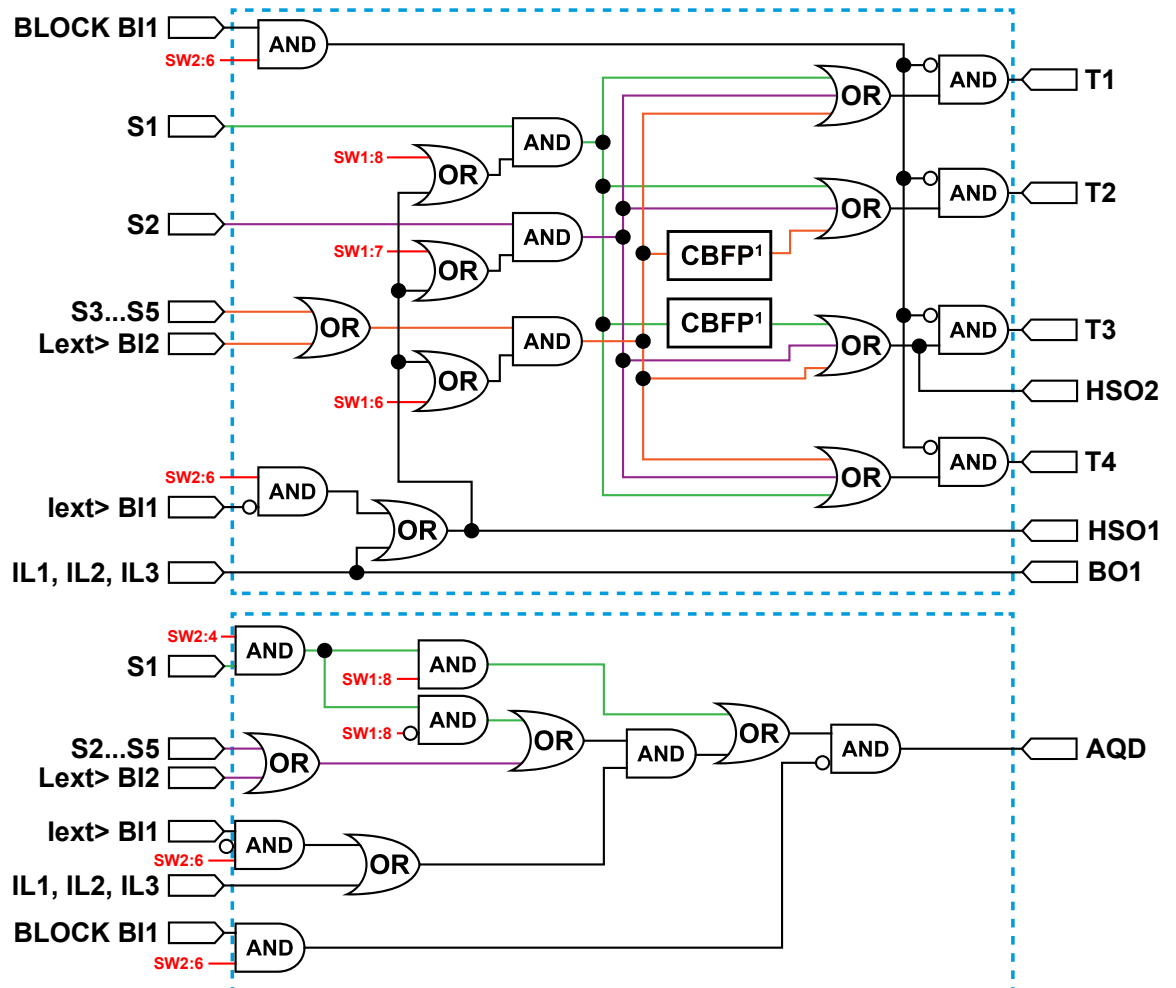
HSO1 can be used for sending overcurrent detection signal to protection devices installed to outgoing feeders.

Figure. 8.3.2 - 29. Logic matrix of SS:0b.

SS:0b		OUTPUTS							
		T1	T2	T3	T4	HSO1	HSO2	BO1	AQD
INPUTS	S1	x^1	x^1	CBFP ¹	x^1		CBFP ¹		x^3
	S2	x^1	x^1	x^1	x^1		x^1		x^2
	S3, S4, S5	x^1	CBFP ¹	x^1	x^1		x^1		x^2
	lext> AQ-101 (BI2)	x^1	CBFP ¹	x^1	x^1		x^1		x^2
	lext> AQ-110 (BI1)					x			
	I> Overcurrent					x		x	

1. Activates only if channel is set to light only mode or if overcurrent signal (I> or BI1) is ON.
2. Activates only when overcurrent signal (I> or BI1) is ON.
3. Activates only when "Fast /CBFP" DIP switch is set to FAST mode. Also when SW1/8 is set to light only mode, current detection is not required for activation.

Figure. 8.3.2 - 30. Simplified logic diagram of SS:0b.

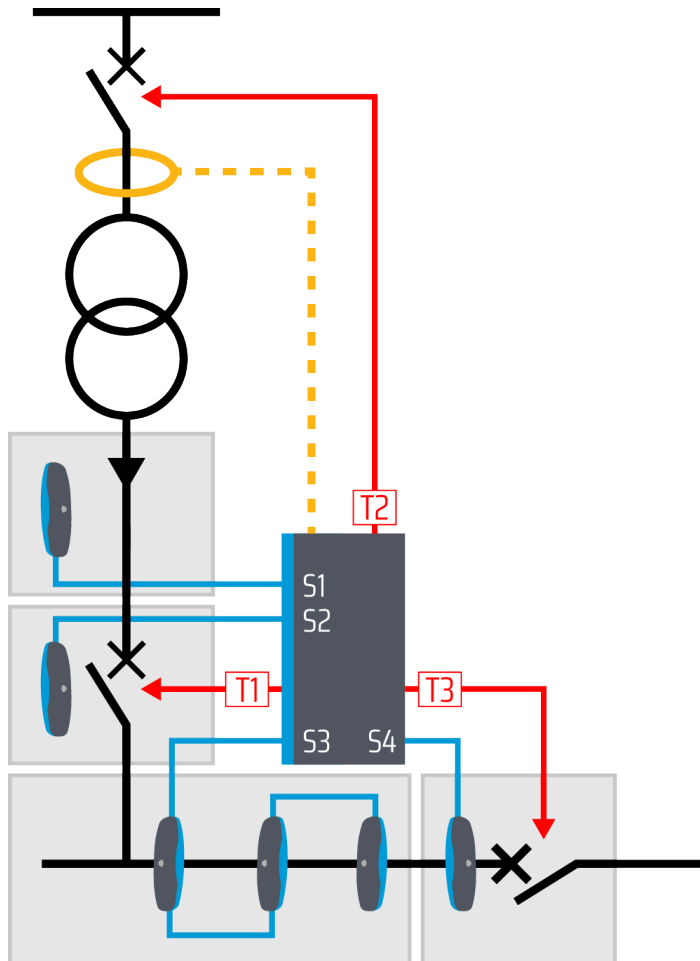


- 1) CBFP signals are activated instantly if "Fast /CBFP" DIP switch is set to FAST mode, delayed if DIP switch 2/4 is set to CBFP mode. SW2/3 can be used for choosing 100 ms or 150 ms delay time.

8.3.3 SS:1a

The logic scheme SS:1a is designed for selective incoming feeder arc protection. It can be used for substations with one or more incoming feeders. This scheme is a modification of SS:0a. AQ-1000 arc quenching device is not tripped from S1 channel in this scheme.

Figure. 8.3.3 - 31. SS:1a example application.



If a fault is detected in the incoming feeder cable compartment (S1), circuit breakers on both sides of the transformer will be tripped with T1 and T2. If the fault is not cleared on time, T3 will trip the tie breaker (if applicable) and HSO2 sends master trip signal to the outgoing feeder protection devices after the CBFP time delay has passed.

If a fault is detected in the incoming feeder circuit breaker compartment (S2), circuit breakers on both sides of the transformer (T1-T2), tie breaker (T3) and all outgoing feeders (HSO2) will be tripped. If a fault is detected in the busbar compartment (S3) or in the tie breaker compartment (S4) the incoming feeder (T1), tie breaker (T3) and all outgoing feeders (HSO2) will be tripped. If the fault is not cleared on time, T2 will trip the incoming feeder HV side circuit breaker after the CBFP time delay has passed.

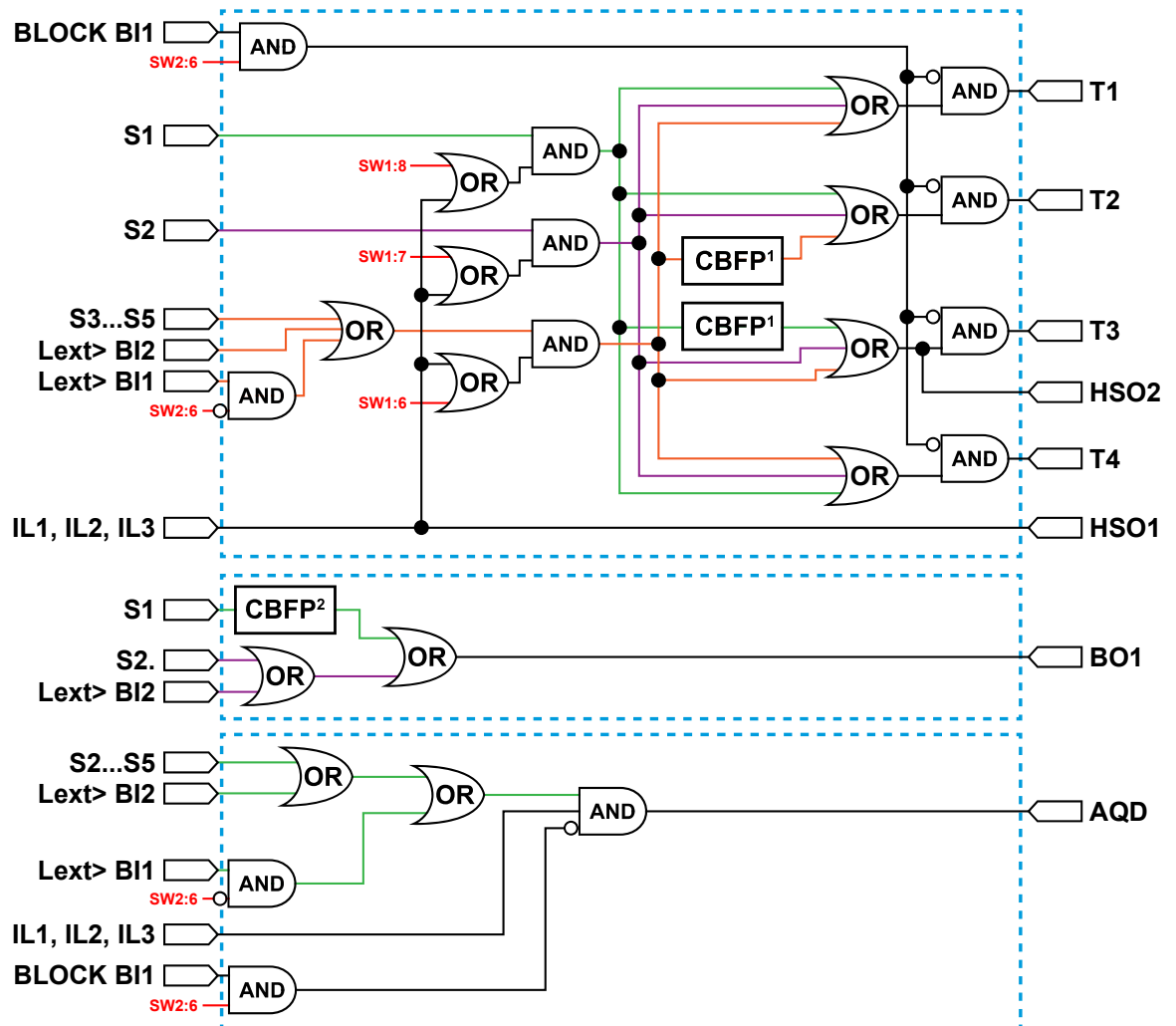
HSO1 can be used for sending overcurrent detection signal to protection devices installed to outgoing feeders.

Figure. 8.3.3 - 32. Logic matrix of SS:1a.

SS:1a		OUTPUTS							
		T1	T2	T3	T4	HSO1	HSO2	BO1	AQD
INPUTS	S1	x^1	x^1	CBFP ¹	x^1		CBFP ¹	x^2	
	S2	x^1	x^1	x^1	x^1		x^1	x	x^3
	S3, S4, S5	x^1	CBFP ¹	x^1	x^1		x^1	x	x^3
	Lext> AQ-110 (BI1)	x^1	CBFP ¹	x^1	x^1		x^1		x^3
	Lext> AQ-101 (BI2)	x^1	CBFP ¹	x^1	x^1		x^1	x	x^3
	I> Overcurrent					x			

1. Activates only if channel is set to light only mode or if overcurrent signal (I>) is ON.
2. If "Fast /CBFP" DIP switch is set to CBFP mode, channel must be set to light only mode or overcurrent signal (I>) must be active for output activation to occur. If "Fast / CBFP" is set to FAST mode, no current signal is required.
3. Activates only if overcurrent signal (I>) is ON.

Figure. 8.3.3 - 33. Simplified logic diagram of SS:1a.

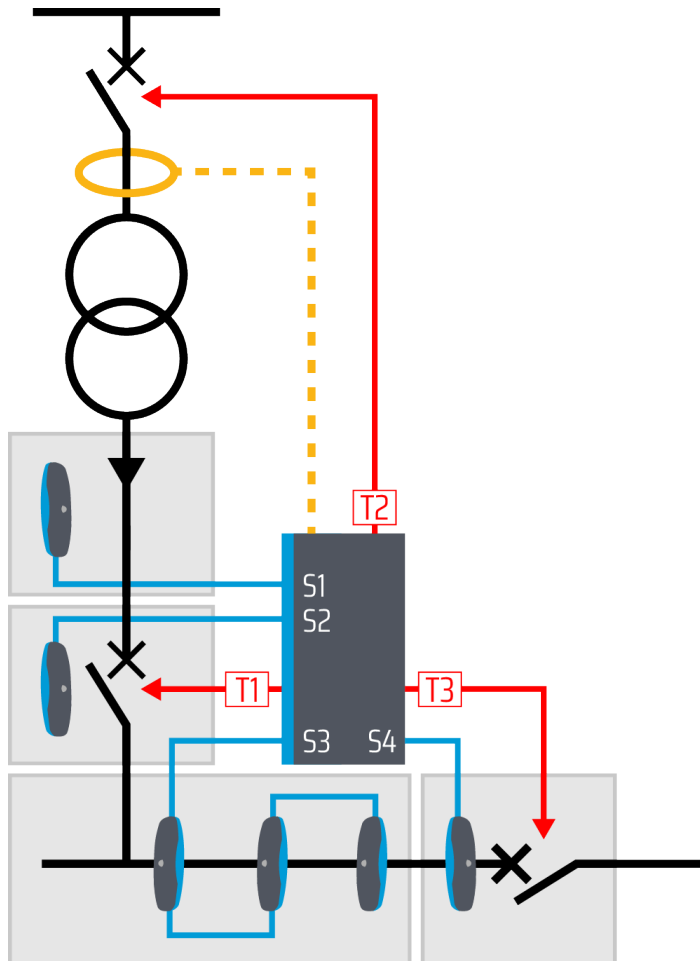


- 1) CBFP signals are activated instantly if "Fast / CBFP" DIP switch is set to FAST mode.
- 2) If "Fast / CBFP" DIP switch is set to CBFP mode, channel must be set to light only mode or overcurrent signal (I>) must be active for output activation to occur. If "Fast /CBFP" DIP switch is set to FAST mode, no current signal is required.

8.3.4 SS:1b

The logic scheme SS:1b is designed for selective incoming feeder arc protection. It can be used for substations with one or more incoming feeders. This scheme is a modification of SS:1a. In this scheme BI1 is used for receiving overcurrent signals AQ-110 devices installed to other incoming feeders.

Figure. 8.3.4 - 34. SS:1b example application.



If a fault is detected in the incoming feeder cable compartment (S1), circuit breakers on both sides of the transformer will be tripped with T1 and T2. If the fault is not cleared on time, T3 will trip the tie breaker (if applicable) and HSO2 sends master trip signal to the outgoing feeder protection devices after the CBFP time delay has passed.

If a fault is detected in the incoming feeder circuit breaker compartment (S2), circuit breakers on both sides of the transformer (T1-T2), tie breaker (T3) and all outgoing feeders (HSO2) will be tripped. If a fault is detected in the busbar compartment (S3) or in the tie breaker compartment (S4) the incoming feeder (T1), tie breaker (T3) and all outgoing feeders (HSO2) will be tripped. If the fault is not cleared on time, T2 will trip the incoming feeder HV side circuit breaker after the CBFP time delay has passed.

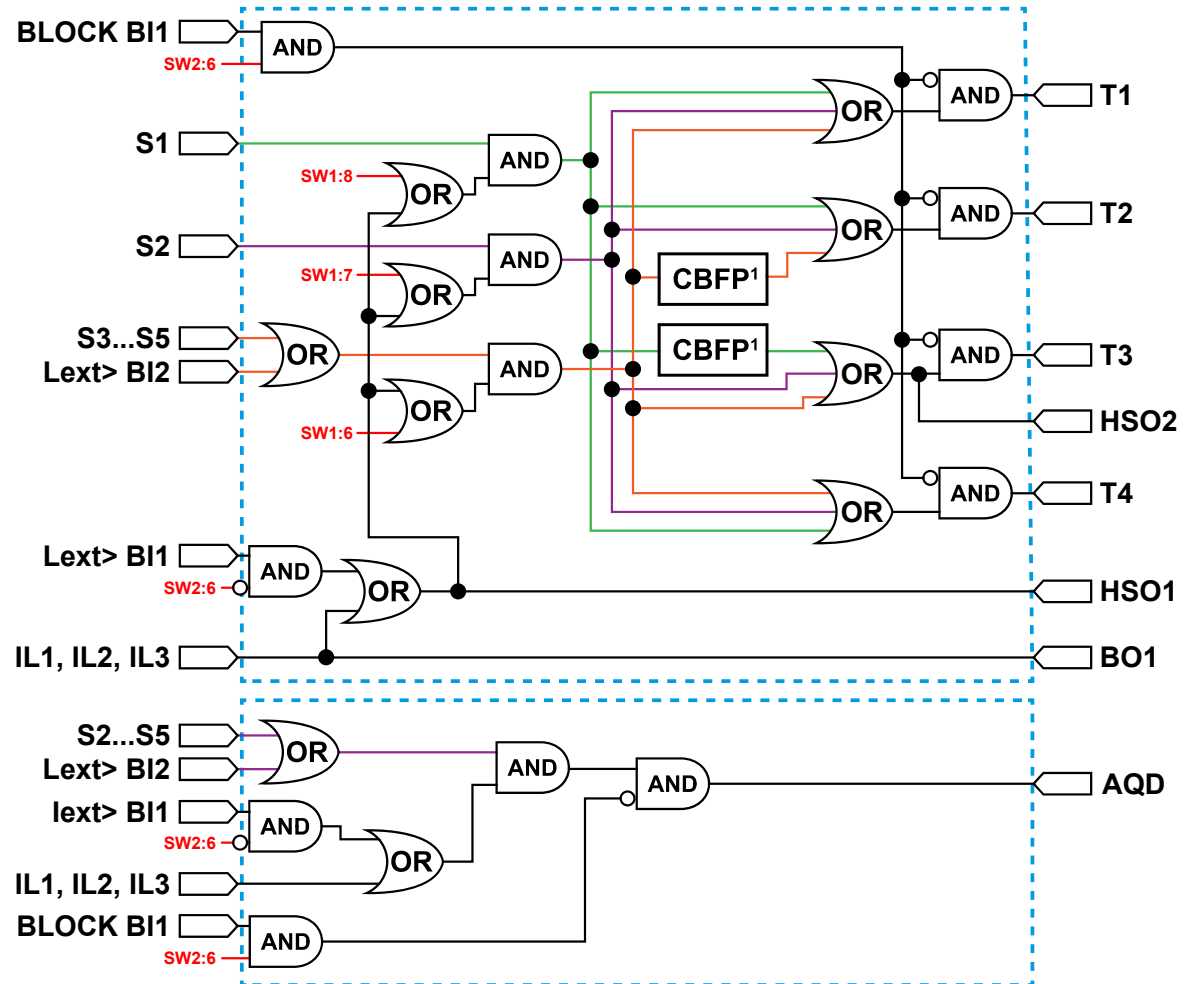
HSO1 can be used for sending overcurrent detection signal to protection devices installed to outgoing feeders.

Figure. 8.3.4 - 35. Logic matrix of SS:1b.

SS:1b		OUTPUTS						
INPUTS	S1	T1	T2	T3	T4	HSO1	HSO2	BO1
	S2	x^1	x^1	CBFP ¹	x^1		CBFP ¹	
	S3, S4, S5	x^1	x^1	x^1	x^1		x^1	x^2
	Lext> AQ-101 (BI2)	x^1	CBFP ¹	x^1	x^1		x^1	x^2
	lext> AQ-110 (BI1)					x		
	I> Overcurrent					x		x

1. Activates only if channel is set to light only mode or if overcurrent signal (I> or BI1) is ON.
2. Activates only if overcurrent signal (I> or lext>) is ON.

Figure. 8.3.4 - 36. Simplified logic diagram of SS:1b.

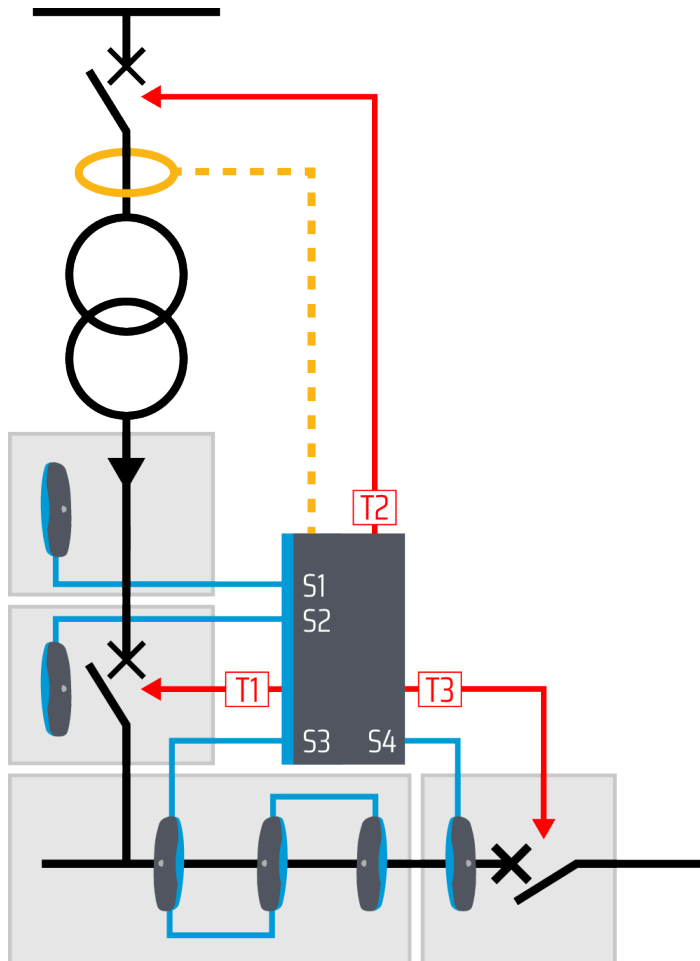


- 1) CBFP signals are activated instantly if "Fast /CBFP" DIP switch is set to FAST mode.

8.3.5 SS:2a

The logic scheme SS:2a is designed for selective incoming feeder arc protection. It can be used for substations with one or more incoming feeders. This scheme is a modification of SS:0a. Tie breaker is tripped immediately when an arc fault is detected in the incoming feeder cable compartment.

Figure. 8.3.5 - 37. SS:2a example application.



If a fault is detected in the incoming feeder cable compartment (S1), circuit breakers on both sides of the transformer will be tripped with T1 and T2 and the tie breaker will be tripped with T3 (if applicable). If the fault is not cleared on time HSO2 sends master trip signal to the outgoing feeder protection devices after the CBFP time delay has passed.

If a fault is detected in the incoming feeder circuit breaker compartment (S2), circuit breakers on both sides of the transformer (T1-T2), tie breaker (T3) and all outgoing feeders (HSO2) will be tripped. If a fault is detected in the busbar compartment (S3) or in the tie breaker compartment (S4) the incoming feeder (T1), tie breaker (T3) and all outgoing feeders (HSO2) will be tripped. If the fault is not cleared on time, T2 will trip the incoming feeder HV side circuit breaker after the CBFP time delay has passed.

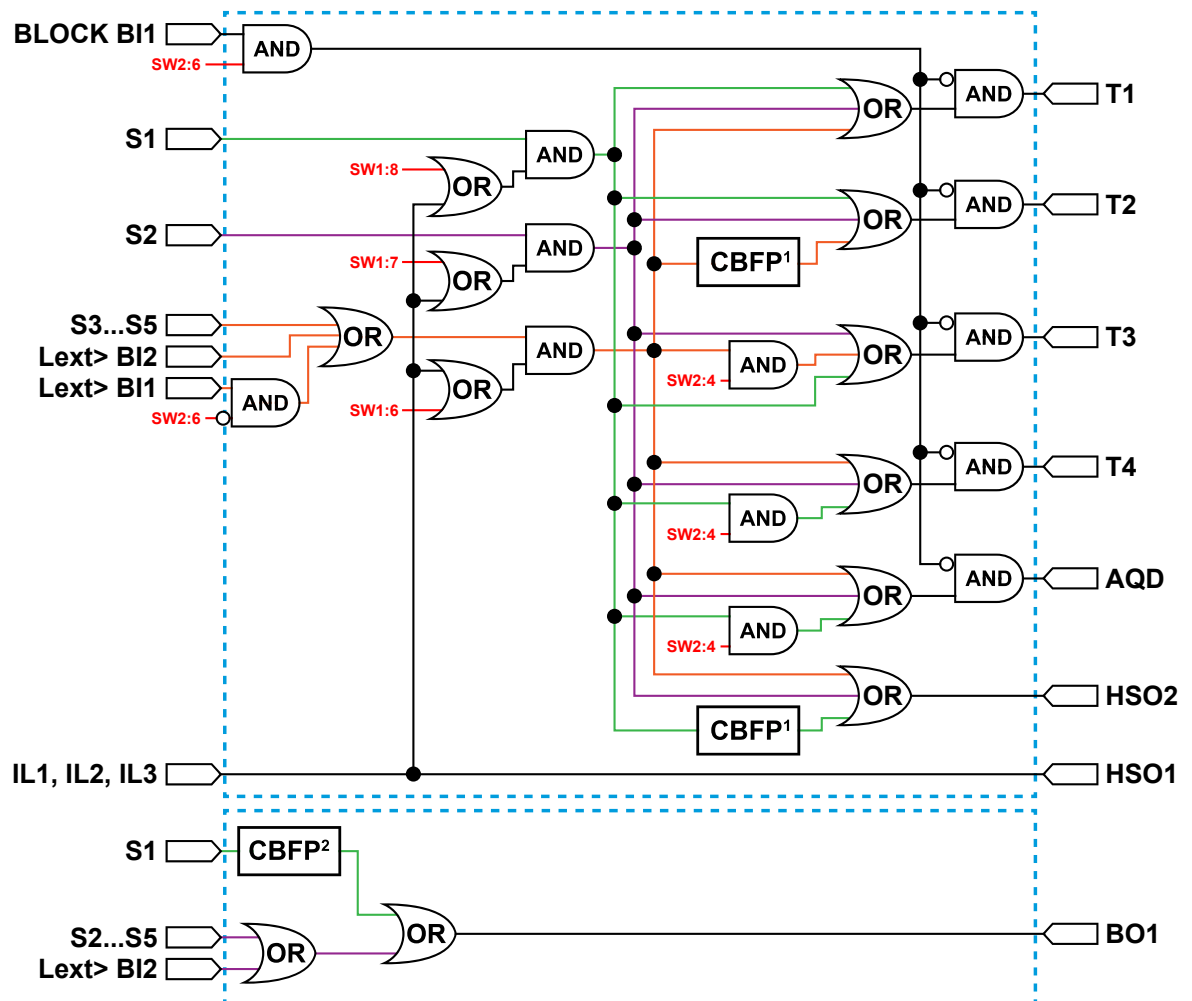
HSO1 can be used for sending overcurrent detection signal to protection devices installed to outgoing feeders.

Figure. 8.3.5 - 38. Logic matrix of SS:2a.

SS:2a		OUTPUTS							
INPUTS	S1	T1	T2	T3	T4	HSO1	HSO2	BO1	AQD
	S2	x^1	x^1	x^1	x^2		CBFP ¹	CBFP ³	x^2
	S3, S4, S5	x^1	x^1	x^1	x^1		x^1	x	x^1
	Lext> AQ-110 (BI1)	x^1	CBFP ¹	x^2	x^1		x^1		x^1
	Lext> AQ-101 (BI2)	x^1	CBFP ¹	x^2	x^1		x^1	x	x^1
	I> Overcurrent					x			

1. Activates only if channel is set to light only mode or if overcurrent signal (I>) is ON.
2. Activates only if channel is set to light only mode or if overcurrent signal (I>) is ON. No activation if "Fast / CBFP" DIP switch is set to CBFP mode.
3. If "Fast / CBFP" DIP switch is set to CBFP mode, light channel must be set to light only mode or any overcurrent signal (I>) must be active for output activation to occur. If "Fast /CBFP" DIP switch is set to FAST mode, no current signal is required.

Figure. 8.3.5 - 39. Simplified logic diagram of SS:2a.

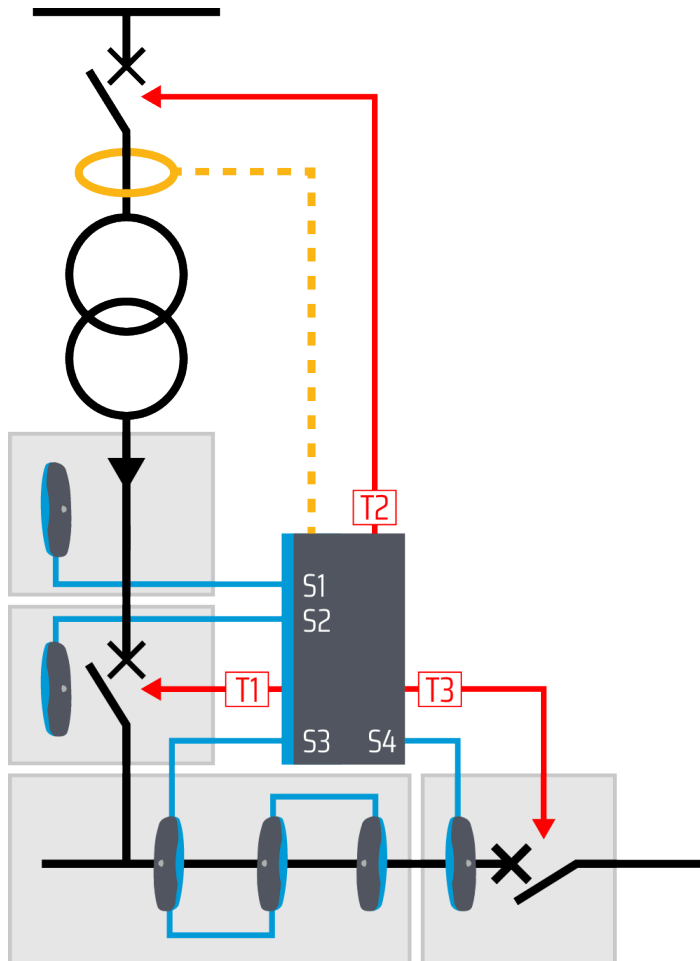


- 1) CBFP signals are activated instantly if "Fast /CBFP" DIP switch is set to FAST mode.
- 2) If "Fast / CBFP" DIP switch is set to CBFP mode, light channel must be set to light only mode or overcurrent signal (I>) must be active for output activation to occur. If "Fast /CBFP" DIP switch is set to FAST mode, no current signal is required.

8.3.6 SS:2b

The logic scheme SS:2b is designed for selective incoming feeder arc protection. It can be used for substations with one or more incoming feeders. This scheme is a modification of SS:2a. In this scheme BI1 is used for receiving overcurrent signals AQ-110 devices installed to other incoming feeders.

Figure. 8.3.6 - 40. SS:2b example application.



If a fault is detected in the incoming feeder cable compartment (S1), circuit breakers on both sides of the transformer will be tripped with T1 and T2 and the tie breaker will be tripped with T3 (if applicable). If the fault is not cleared on time HSO2 sends master trip signal to the outgoing feeder protection devices after the CBFP time delay has passed.

If a fault is detected in the incoming feeder circuit breaker compartment (S2), circuit breakers on both sides of the transformer (T1-T2), tie breaker (T3) and all outgoing feeders (HSO2) will be tripped. If a fault is detected in the busbar compartment (S3) or in the tie breaker compartment (S4) the incoming feeder (T1), tie breaker (T3) and all outgoing feeders (HSO2) will be tripped. If the fault is not cleared on time, T2 will trip the incoming feeder HV side circuit breaker after the CBFP time delay has passed.

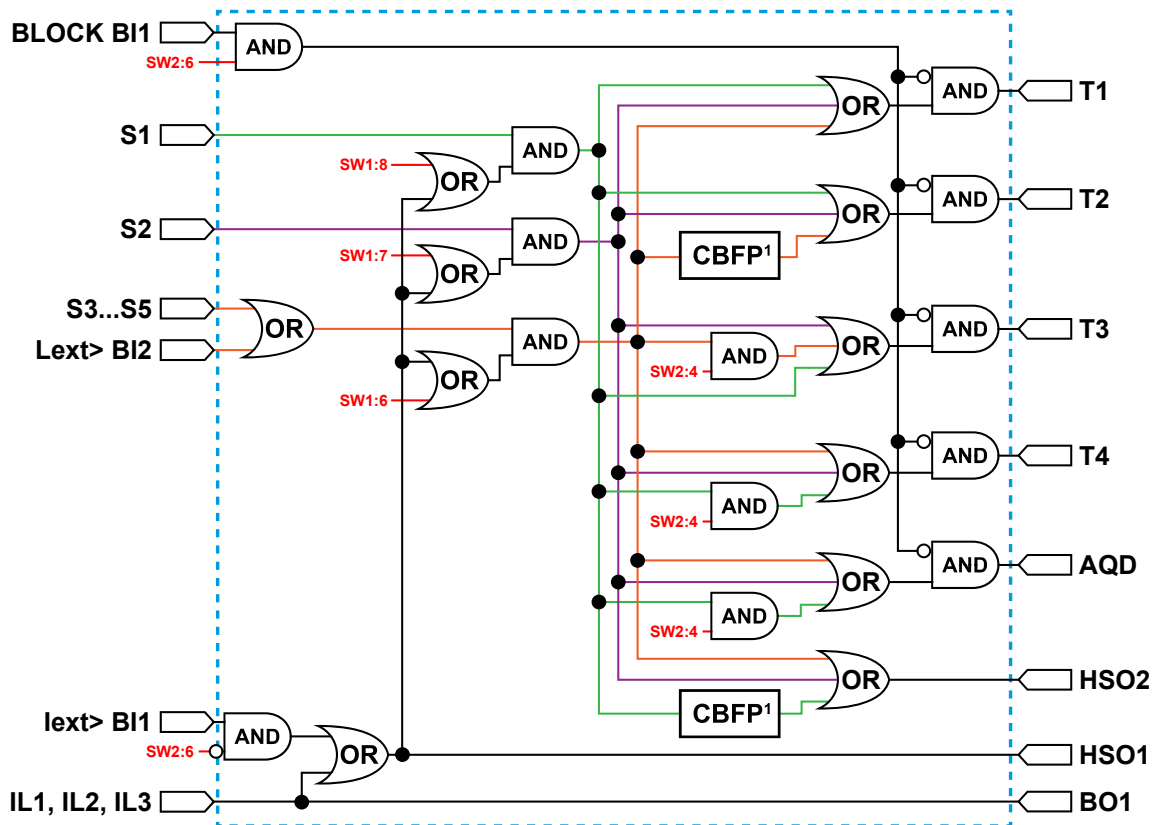
HSO1 can be used for sending overcurrent detection signal to protection devices installed to outgoing feeders.

Figure. 8.3.6 - 41. Logic matrix of SS:2b.

SS:2b		OUTPUTS							
INPUTS	S1	T1	T2	T3	T4	HSO1	HSO2	BO1	AQD
	x^1	x^1	x^1	x^1	x^2		CBFP ¹		x^2
	S2	x^1	x^1	x^1	x^1		x^1		x^1
	S3, S4, S5	x^1	CBFP ¹	x^1	x^1		x^1		x^1
	Lex> AQ-101 (BI2)	x^1	CBFP ¹	x^1	x^1		x^1		x^1
	lex> AQ-110 (BI1)					x			
	I> Overcurrent					x		x	

1. Activates only if channel is set to light only mode or if overcurrent signal (I> or BI1) is ON.
2. Activates only if channel is set to light only mode or if overcurrent signal (I> or BI1) is ON. No activation if "Fast / CBFP" DIP switch is set to CBFP mode.

Figure. 8.3.6 - 42. Simplified logic diagram of SS:2b.



- 1) CBFP signals are activated instantly if "Fast /CBFP" DIP switch is set to FAST mode.

8.4 Push button (SET)

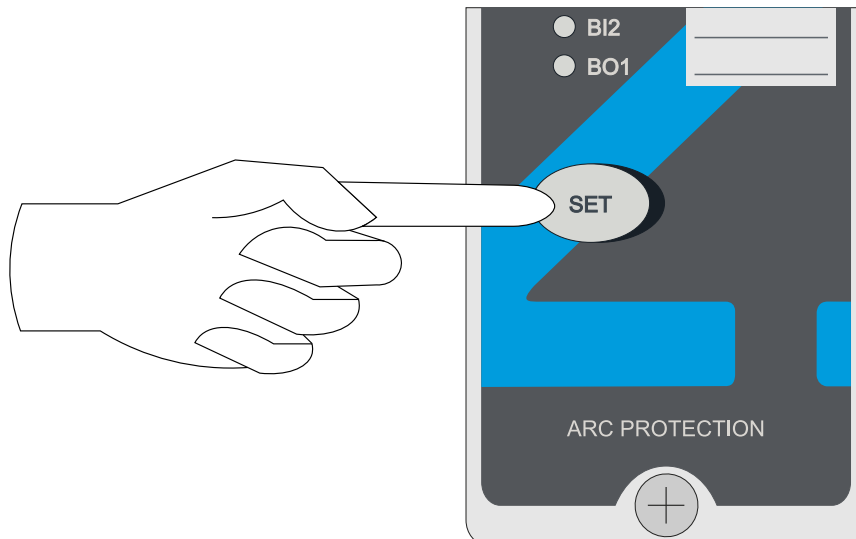
The device has one push button, SET, and it can be used for all operational functions. The push button is used for:

1. Setting up the system (also known as auto-configuration)
2. Resetting the indicator LEDs
3. Resetting latched outputs
4. Checking the input connections

**WARNING!**

Do **NOT** use force when pushing the button, as this may cause the button to lodge deep inside the chassis!

Figure. 8.4 - 43. The "SET" push button on the device's front panel.



8.4.1 System setup (auto-configuration)

After DIP switches have been set to correct position and all sensors, binary inputs and binary outputs have been connected, a system setup procedure (also known as auto-configuration) must be performed. The sequence is initialized by pressing the **SET** push button for two seconds. This causes the sensor and binary I/O LEDs to start blinking. The device scans these inputs to see if they are connected; when an input is detected, the corresponding LED lights up to indicate that a connection was found. All inputs that are not connected continue to blink for three more seconds. Then, all LEDs are turned off. Additionally, the DIP switch settings are stored in the non-volatile memory after this sequence.

If the device detects any deviation from the saved configuration, self supervision system issues an alarm. See the [System self-supervision](#) chapter for more information.

All arc sensors are operational even when they have not been auto-configured. System setup is only used for self-supervision purposes.

**NOTICE!**

Please note that to reconfigure a device with fewer connections (BI or arc sensors) than in the previously memorized setup, one of the DIP switches must be moved back and forth once before the system setup procedure is carried out. You can reconfigure a device with more connections at any time without having to move one of the DIP switches.

8.4.2 Reset

All LED indications and latched trip relays can be reset by pressing the **SET** push button.

8.4.3 Input connection check

After the system setup (auto-configuration) procedure is completed, you can verify the connectivity of arc sensors and binary input channels by pressing the **SET** push button three (3) times within two (2) seconds. The LEDs of the corresponding arc sensors, binary input channels and the "Power" LED start blinking. The LEDs blink as many times as there are connected sensors and binary output channels from other devices.

8.5 Circuit breaker failure protection

The circuit breaker failure protection function is used for detecting a failure to open the circuit breaker when tripping command has been given by the arc protection relay. The CBFP function activates when the arc protection relay detects the presence of fault for a set duration (100 ms or 150 ms). In case of circuit breaker failure the arc protection relay will send a trip signal to the surrounding breakers. Please note that if the device is set to operate on both arc light and overcurrent, both conditions must persist to activate the CBFP command. The CBFP function can be set to operate either on a 100-ms or a 150-ms delay (please refer to the [DIP switch settings](#) chapter for more information). The operation logic of CBFP function depends on the chosen logic scheme (see the [Logic schemes](#) chapter for more information).

8.6 LED indicator functions

The AQ-110PLV device has nineteen (19) indication LEDs on the device's front panel. Apart from the "Power" and "Error" LEDs, the user can write their own identifications for each of the remaining LEDs on the text insert located in the transparent pocket next to the LEDs.

When the device is powered up, it performs an LED test. All LEDs turn on for two (2) seconds and then turn off; only the blue "Power" LED stays on.

When the device operates normally, only the blue "Power" LED is lit.

All current measuring channels (that is, IL1, IL2 and IL3) have their own indication LEDs. When any channel measurement exceeds the set threshold value, its corresponding LED turns on. In an open CT condition both the corresponding current channel indicator LED and the "Error" LED are blinking.

If an arc sensor is activated, its corresponding LED turns on. Activated arc sensor LEDs will stay on until user has reset them with "SET" push button.

If there is a loose sensor wire or if the self-supervision function detects a configuration mismatch (that is, a new sensor has been attached but the auto-configuration system setup has not been run), the corresponding LED starts flashing and the "Error" LED activates.

The binary I/O LEDs indicate the status of the input and output lines. If any of the lines become active, the corresponding LED turns on. All light channel and trip indication LEDs are latched, even if the DIP switch settings are in the non-latched mode.

All LED indications are stored in the non-volatile memory (EPROM) to help identify the necessary trip information even after auxiliary power is lost. When the device is re-powered after a power supply loss, the front panel shows the status of all LEDs.

You can clear the LEDs by pushing the **SET** button.

8.7 LED operations guide

Table. 8.7 - 10. LED operation descriptions.

LED name (color)	Light off	Steady light	Blinking light	Action if abnormal
POWER (blue)	The auxiliary power supply is disconnected.	The auxiliary power supply is connected.	(N/A)	Check the power supply.
ERROR (red)	The system is healthy.	A system failure has occurred.	A configuration mismatch has been detected. Protection is partially operational.	Verify the system condition (see the System self-supervision and Troubleshooting chapters).
T1–T4 (red)	Normal status.	The trip relay has activated.	(N/A)	Check what caused the trip, clear the fault and reset the indicator LEDs with the push button.
S1–S3 (amber)	Normal status.	Light information has activated the sensor channel.	There is a sensor channel discontinuity or a system setup has not been performed.	Check the sensor continuity or perform a system setup (see the System setup chapter); or , check what activated the sensor.
S4 (amber)	Normal status.	Light information has activated the sensor channel.	There is a sensor channel discontinuity or a system setup has not been performed.	Check the sensor continuity or perform a system setup (see the System setup chapter); or , check what activated the sensor.
S5 (amber)	Normal status.	Light information has activated the fiber sensor channel. Or , if the device has AQD control configured to this fiber channel, an arc flash has activated the channel.	There is a fiber discontinuity or a system setup has not been performed.	Check the sensor continuity or perform a system setup (see the System setup chapter); or , check what activated the sensor.
BI1–BI2 (amber)	Normal status.	The binary input has been activated.	The binary input has a loose connection.	Check the binary input wiring.
BO1 (amber)	Normal status.	The binary output has been activated.	(N/A)	—
IL1–IL3 (amber)	Normal status (the actual current is below the set threshold).	The measured current is above the set threshold.	There is an open CT connection in the channel.	Check the set current thresholds, or check the CT wiring.
HSO1–HSO2 (amber)	Normal status.	The high-speed output has been activated.	(N/A)	Check what activated the output, clear the fault and reset the indicator LEDs with the push button.

8.8 Modbus communication

This device can be ordered with Modbus RTU serial communication to report various signals to external devices. It is mainly designed for connecting to AQ 250 series devices but any Modbus master can be used. If the device has a Modbus connection to an AQ 250 series device, the AQ 250 series device can record events, display data on the display and report the events forward to SCADA system. Up to 16 devices with Modbus connection can be connected to one system. More information on connecting AQ 100 series devices to an AQ 250 series device can be found in AQ 250 series device manuals (arcteq.com/downloads).

For information on Modbus configuration, see the [DIP switches](#) chapter.

Using an AQ 250 series device as a master

The signals sent by the AQ 100 series device can be used for fault indications on the AQ 250 device and for reporting the signals forward with IEC 61850 or other communication protocol. Fault indication can be done by setting up an alarm display for each incoming signal or by building a mimic.

Figure. 8.8 - 44. An AQ 250 device can receive signals through Modbus and use them to control logic of the device, to create mimics, and to report the values to IEC 61850.

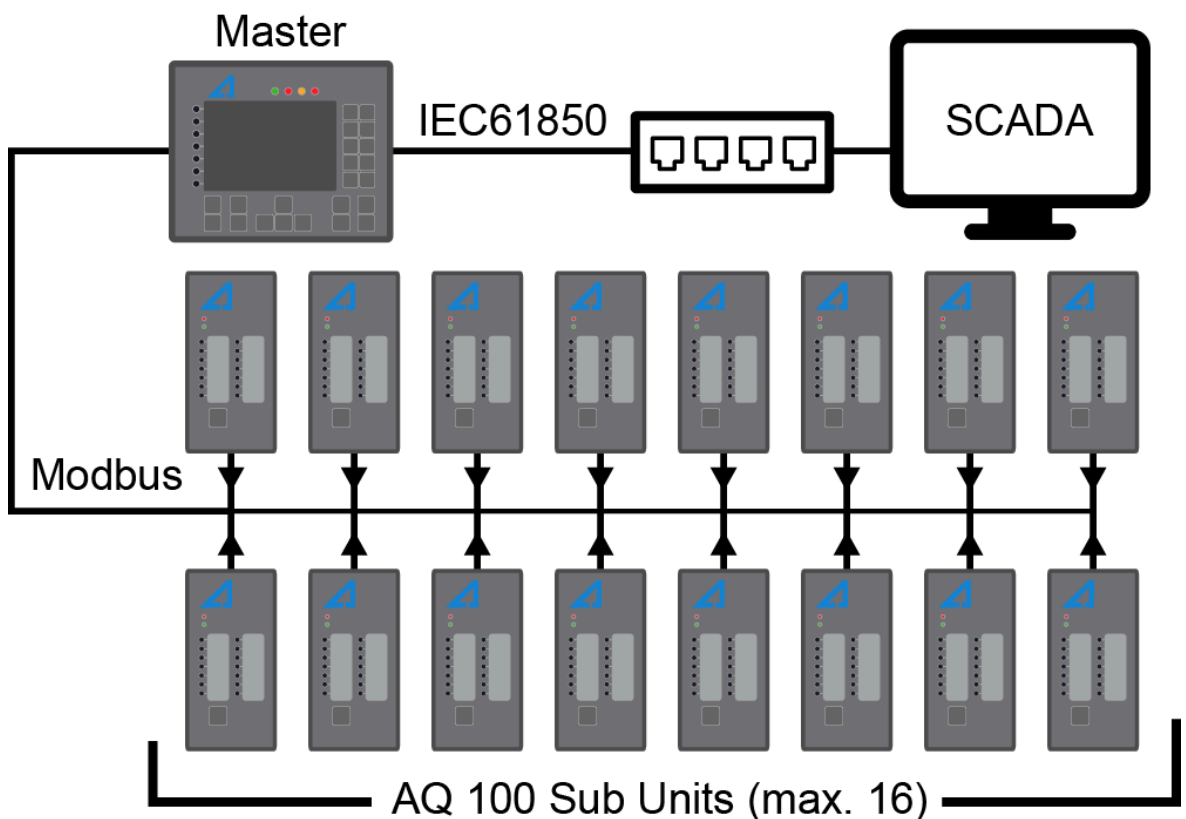


Figure. 8.8 - 45. Example mimic where sensor activation location is indicated with a symbol.

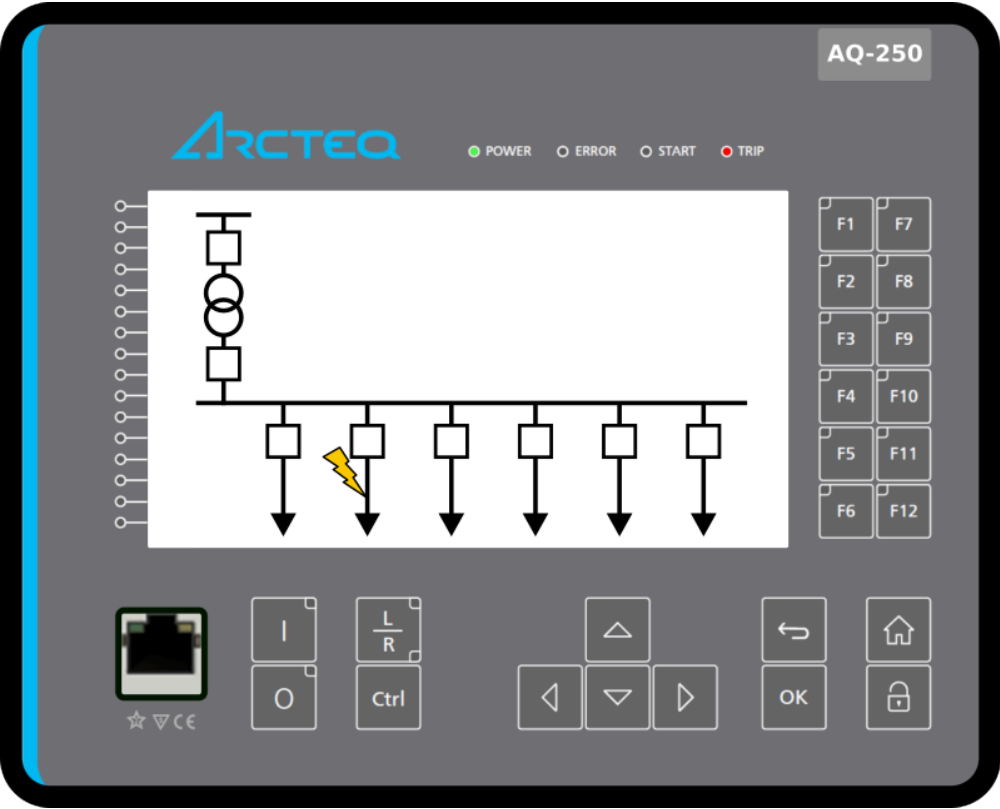
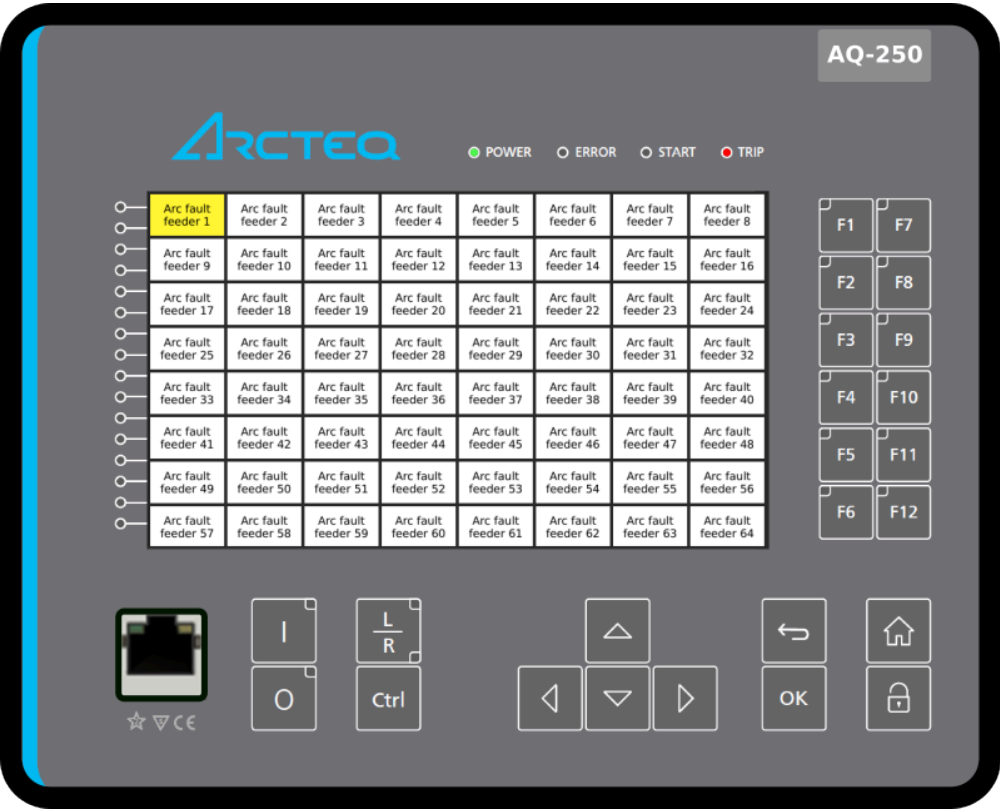


Figure. 8.8 - 46. In AQ-S254 it is possible to set up the display to show sensor activations in alarm display.



Modbus polling rate

The recommended maximum polling rate for the Modbus protocol is twice per second (2/s). The device also works with higher polling rates; however, unless there is a pressing reason to exceed the recommended rate, it is strongly advised to stay below the recommended maximum polling rate.

Modbus map

Available registers depend on the device type. All available Modbus signals are listed in the table below, but Modbus map with full details can be downloaded from Arcteq Relays website (arcteq.fi./downloads/).

Table. 8.8 - 11. Register descriptions.

Reg. No	Register Name	Description
1	Sensors installed to channel	Indicates if a sensor has been connected to the channel or not.
2	Sensor channel activations	Indicates sensor activation for each channel.
3	I/O activations	Indicates activation of I/O: <ul style="list-style-type: none"> • binary inputs • binary outputs • trip relays • high-speed outputs • arc quenching device control • phase overcurrent (I>) detection • earth fault detection
4	DIP switch settings	Position of the DIP switches (ON/OFF).
5-6	Serial number	Serial number of the device.
7	Latched sensor channel activations	Same as "Sensor channel activations", but the activated status is held until reset with "Clear latched signals" (reg. number 11).
8	Latched I/O activations	Same as "I/O activations", but the activated status is held until reset with "Clear latched signals" (reg. number 11).
9	Sensor channel errors	Activates if the number of sensors connected to the channel doesn't match with the loaded configuration (e.g. a sensor has been disconnected).
10	DIP switch settings, part 2	Position of the DIP switches (ON/OFF).
11	Clear latched signals (reg. numbers 7, 8 & 19)	Writeable register. Clears signals latched in registers 7, 8 & 19. These latched signals are not reset when "SET" button is pressed.
12	Device settings (DIP switch SW2)	Position of the DIP switches (ON/OFF).
13	Device settings (DIP switch SW3)	Position of the DIP switches (ON/OFF).
14	(reserved)	-
15	Number of sensors installed to the channel	Number of sensors connected to the channel (0...3).

16	Number of devices connected to the input (BI1 & BI2)	Detected number of devices (binary output or high-speed output) connected to the binary input.
17	Number of devices connected to the input (BI3 & BI4)	Detected number of devices (binary output or high-speed output) connected to the binary input.
18	Number of devices connected to the input (BI5 & BI6)	Detected number of devices (binary output or high-speed output) connected to the binary input.
19	I/O channels activated, extended (Latched)	Same as "I/O activations", but the activated status is held until reset with "Clear latched signals" (reg. number 11).
20	Measured current IL1 - ADC Raw values	Raw phase current value measured by IL1 channel.
21	Measured current IL2 - ADC Raw values	Raw phase current value measured by IL2 channel.
22	Measured current IL3 - ADC Raw values	Raw phase current value measured by IL3 channel.
23	I0: Measured current, ADC values	Raw residual current value measured by I0 channel.
24	IL1, IL2 & IL3: Set overcurrent level, ADC values	Raw phase overcurrent setting level in use.
25	I0: Set overcurrent level, ADC values	Raw earth fault setting level in use.
26	IL1: Measured current, calculated, A	Phase current value measured by IL1 channel in amperes.
27	IL2: Measured current, calculated, A	Phase current value measured by IL2 channel in amperes.
28	IL3: Measured current, calculated, A	Phase current value measured by IL3 channel in amperes.
29	I0: Measured current, calculated, A	Residual current value measured by I0 channel in amperes.
30	IL1, IL2 & IL3: Set overcurrent level, calculated, A	Phase overcurrent setting level in use in amperes.
31	I0: Set overcurrent level, calculated, A	Earth fault setting level in use in amperes.
32	Error types	Error types are listed in the table below.

Table. 8.8 - 12. Error types.

Code	Name	Description
PSCM	Point sensor connection monitoring	Activates if any point sensor channel is missing sensors or has too many sensors compared to installed number.

Code	Name	Description
FLCM	Fiber loop connection monitoring	Activates if any fiber loop channel is missing its loop or has the loop connected without installation.
BICM	Binary input connection monitoring	Activates if any binary input channel is missing its self-supervision pulses or has too many self-supervision pulses compared to the installed number.
DSSM	DIP switch setting monitoring	Activates if any DIP switch setting is changed, and thus, different than the settings installed.
DIVM	Device internal voltage monitoring	Activates if the monitored internal voltage drops below properly functioning level.
PSLM	Point sensor latch monitoring	Activates if any point sensor channel is steady on for too long.
FLLM	Fiber loop latch monitoring	Activates if any fiber loop channel is steady on for too long.
CTCM	Current transformer connection monitoring	Activates if any current input channel is at zero when at least one current channel is over $0.2 \times I_n$.

8.9 Non-volatile memory

All critical system data (such as DIP switch settings and the system setup file) are stored in the non-volatile memory (EPROM) to ensure accurate operation and full self-supervision even if auxiliary power is lost temporarily.

Additionally, all LED indications are stored in the non-volatile memory to provide a quick recovery of the system status indication. This feature is especially important if tripping causes the device to lose its auxiliary power.

The non-volatile memory does not require a power supply to maintain the information and it retains the settings and the indications permanently without power.

9 System self-supervision

AQ 100 series devices have an extensive self-supervision function, including both internal functions and external connections. The self-supervision function monitors the following:

- power supply
- hardware
- software
- binary input connection(s)
- sensor connection(s)
- DIP switch settings
- current transformer supervision

When the device's condition is healthy and is powered on, the "Power" LED is lit and the system failure (SF) relay is energized. If the self-supervision function detects a faulty condition or if the power supply fails, the SF relay is released and the "Error" LED becomes lit.

Point sensor connection monitoring

If a point sensor failure occurs, the device will go into Error mode. The "Error" LED turns on, the SF relay releases, and the LED of the corresponding faulty sensor channel starts blinking. In this situation the device is still operational, although the faulty sensor channel is blocked. If the error is resolved, the device automatically energizes the SF relay and turns off the "Error" LED and the blinking sensor channel LED. If one or more of the sensors are disconnected, the healthy sensors remain in use and the device remains operational accordingly. However, the device remains in Error mode until the sensors are connected again.

Fiber loop connection monitoring

Fiber loop channel(s) is monitored by a test light pulse that travels through the loop from TX (transmitter) connector to RX (receiver) connector. If a discontinuity is detected, the "Error" LED turns on, the SF relay releases, and the LED of the corresponding faulty sensor channel starts blinking. If the error is resolved, the device automatically clears the system failure status, energizing the SF relay and turning off the "Error" LED. The device remains in Error mode until the sensors are connected again.

Binary input connection monitoring

During system setup (auto-configuration) AQ 100 series device checks how many AQ 100 device binary outputs or high-speed outputs have been connected to binary inputs. Each AQ 100 series device binary output and high-speed output constantly sends a short pulse every second which the receiving binary input uses to count the number of connected devices. If any of the outputs are disconnected after the system setup, the binary input will detect the mismatch and the device will go into Error mode and the binary input LED will blink. If the error is resolved, the device automatically clears the system failure status, energizing the SF relay and turning off the "Error" LED.

DIP switch setting monitoring

The device goes into Error mode, if a DIP switch setting is changed after the system setup procedure has been performed. However, the configured (stored) settings are still valid and the device is still operational.

Current transformer supervision

In AQ 100 series devices with current measurements the self-supervision function also monitors the three phase current transformer circuit. If the current flow exceeds $0.2 \times I_n$ in any of the phases, the device assumes that the switchgear is energized and the function monitors the phases for an open connection. If at least one of the phases remains above $0.2 \times I_n$ while at least one of the others are at zero, the device issues an open CT alarm: the SF relay is released, the "Error" LED is turned on and the LED of the faulty phase(s) starts blinking.

10 Dimensions and installation

The device can be either door-mounted or panel-mounted in a standard 19 inch rack. The device's dimensions (without PCBs) are as follows:

- Height: 177 mm (6.97 in)
- Width: 102 mm (4.02 in)
- Depth: 168 mm (6.61 in).

The figure below presents the dimension of the device visually. It also shows the dimensions of the cut-out (bottom-left) required when mounting the device on a panel.

Figure. 10 - 47. Dimensions of the device.

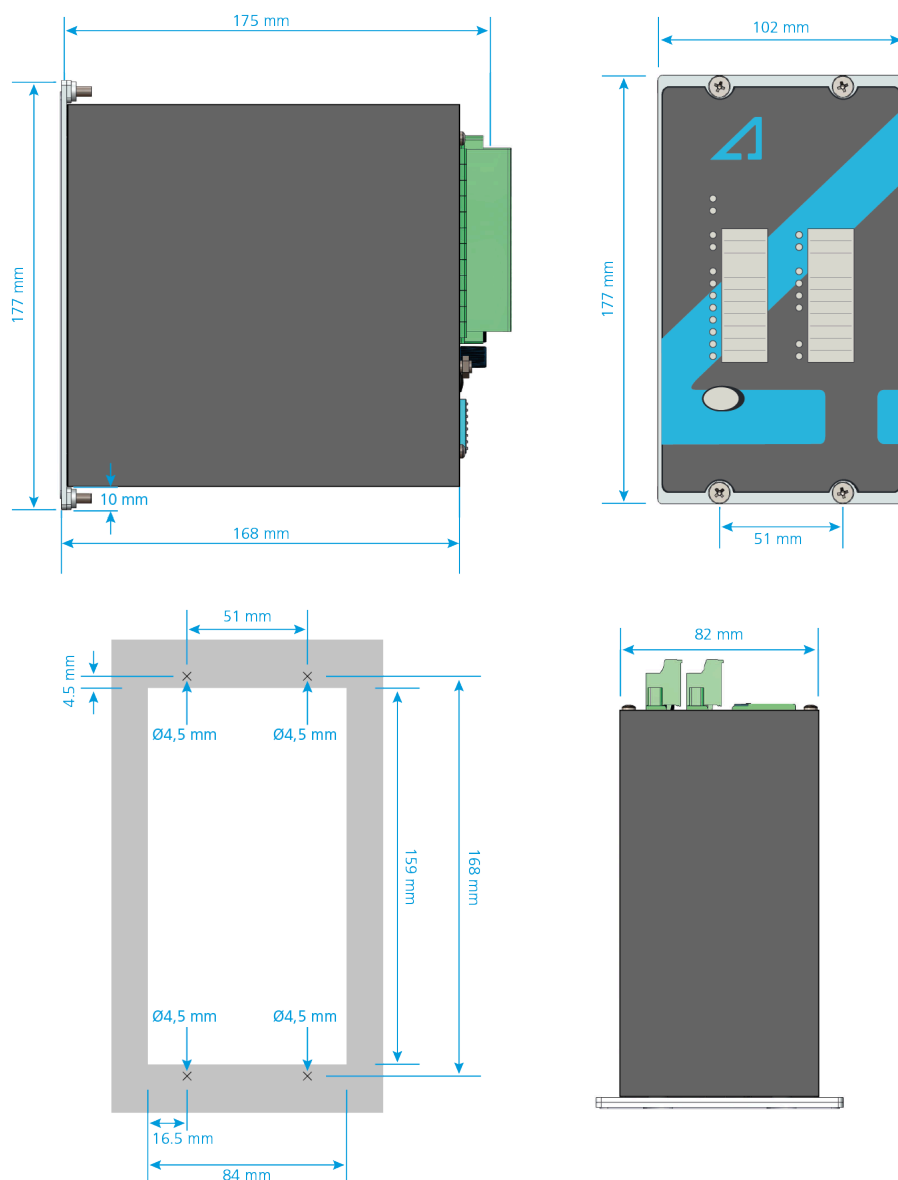
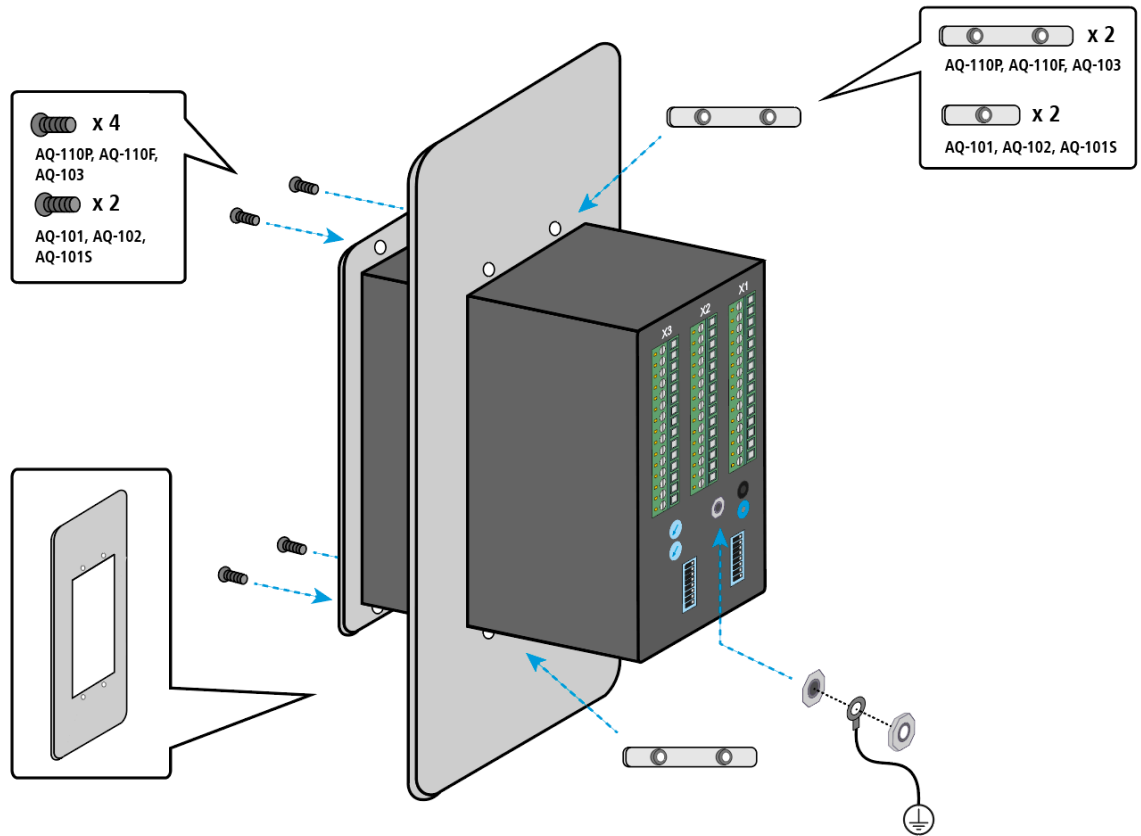


Figure. 10 - 48. Installing a AQ-100 series device to a door.



Point sensors

Figure. 10 - 49. Dimensions of arc flash sensors.

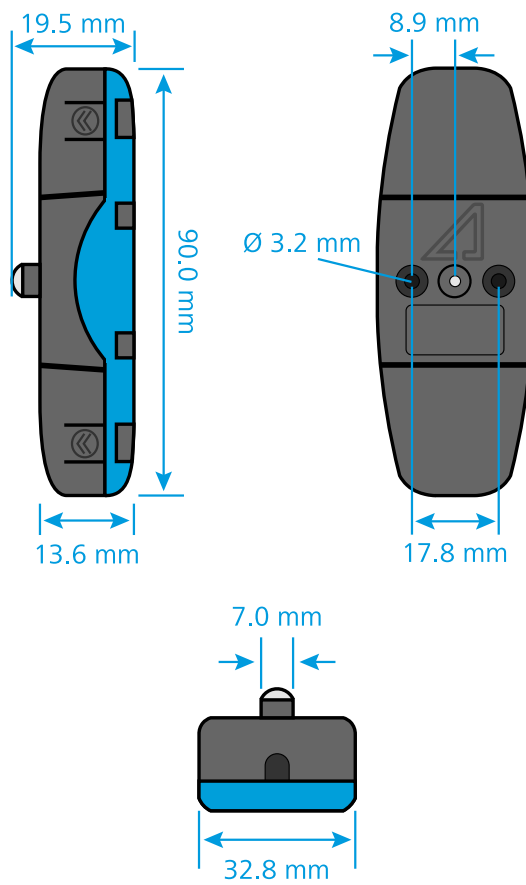


Figure. 10 - 50. Dimensions of the Arcteq sensor bracket.

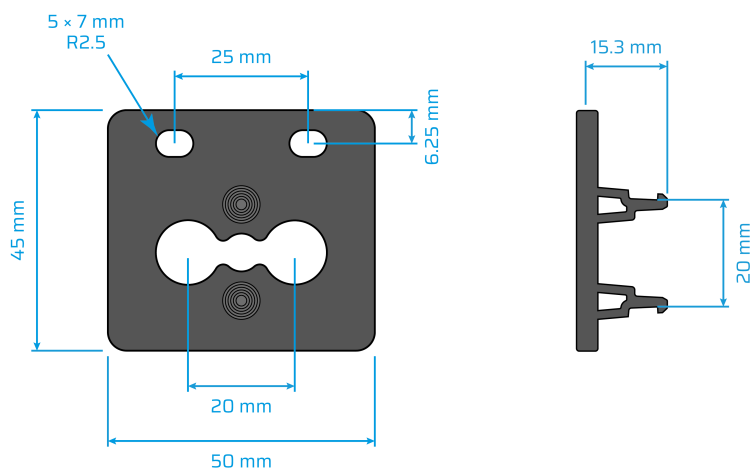
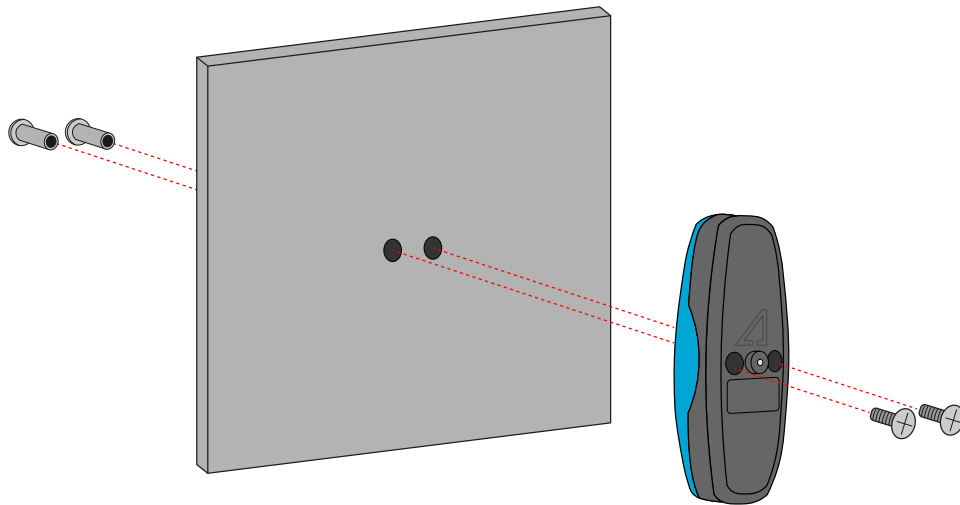


Figure. 10 - 51. Installing an arc flash sensor.

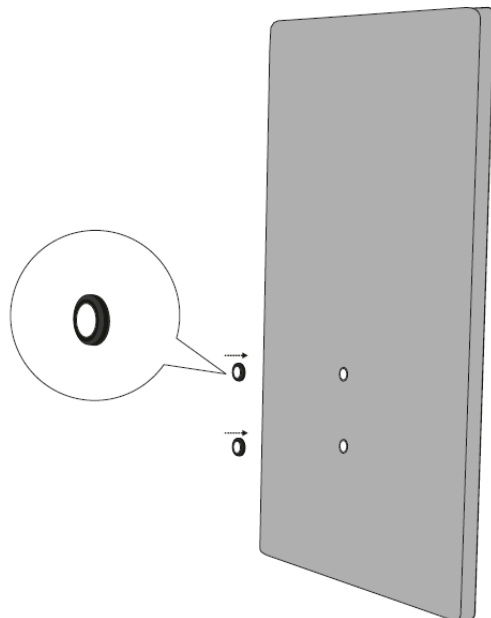


NOTICE!

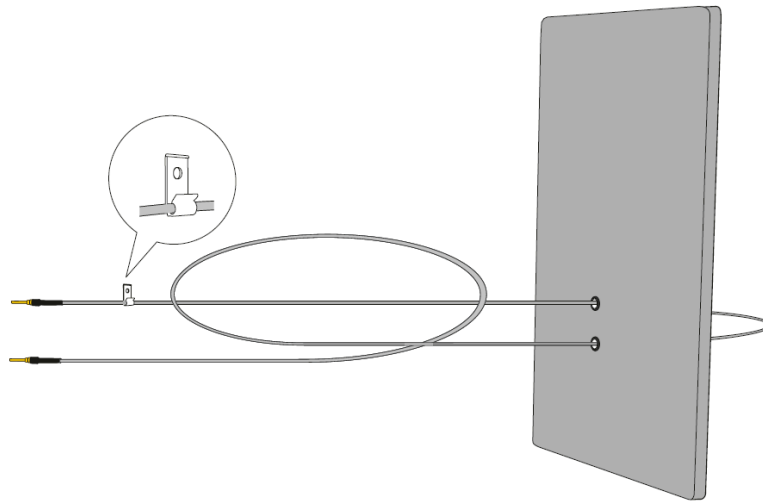
Although the image above depicts the installation of an AQ-01 point sensor, please note that an AQ-02 pressure and point sensor is installed in the same way.

Fiber loops

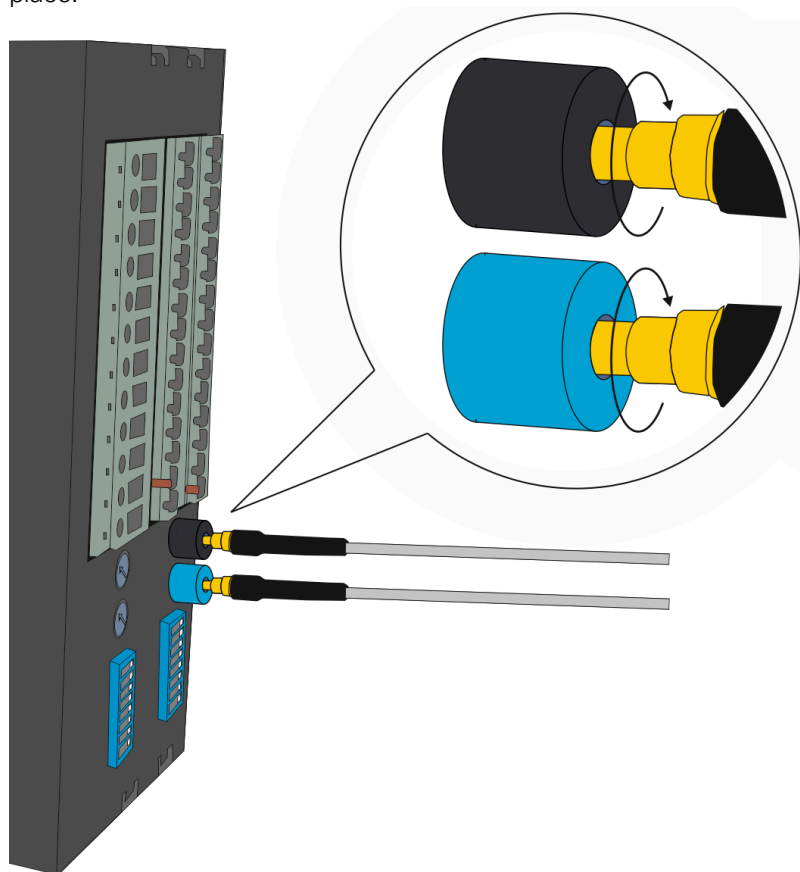
1. Drill holes on the wall for the sensor cable to enter the protected compartment.
2. Install protective covers in the holes to ensure the sensor cable remains unharmed by rough edges.



3. Run the sensor cable through the holes and along the protected area. Fasten it to the compartment walls with cable clips or some other appropriate anchoring method.



4. Turn the black and blue receiver ("Rx") and transceiver ("Tx") screws counter-clockwise and plug in the sensor cable terminals. Then turn the screws clockwise to secure the terminals in their place.



11 Testing

It is recommended that the device is tested prior to substation energizing. Testing is carried out by simulating an arc light for each sensor and verifying that the correct trip contact(s) tripped and that the correct indicator LED(s) turned on.

Any strong camera flash works well to simulate arc light. Please note that small LED lights like smartphone flashes are not strong enough to activate a point sensor or a fiber loop. Having a self-timer helps with the testing process because it can be connected to the test kit. Any strong flashlight works to test non-latched signals and the CBFP function. Before testing please check that the equipment used has a fully charged battery.

11.1 Testing the light-only mode

1. Check that the DIP switch settings are positioned according to your application.
2. Activate the camera flash within 30 cm (12 inches) of the sensor that is being tested.
3. Verify that the indicator LED of the corresponding sensor channel is lit.
4. Verify the activation(s) of the trip relay(s) by checking the circuit breaker's status, or by monitoring the trip contact's status. The circuit breaker should open, or the contacts operate. Please note that you achieve the best test results when you operate the circuit breaker while testing.
5. Verify that the indicator LED(s) of the corresponding trip relay(s) is lit.
6. If you are using the BO1 binary output and/or one or both of the high-speed outputs, verify their signal activation either through the status change of the relevant input, or by measuring the signal output voltage. Please note that BO1 is of the non-latched type.
7. If you are using the BO1 binary output and/or one or both of the high-speed outputs, also verify that their corresponding LED is lit.
8. Press the **SET** push button to reset all indications and latches.
9. If you are using the BI2 binary input as the master trip, activate it and verify that the trip has occurred by repeating the steps 4 and 5.
10. Press the **SET** push button to reset all indications and latches.
11. Repeat the steps 1 through 10 for all sensors.

11.2 Testing the light and current mode

1. Check that the DIP switch settings are positioned according to your application.
2. Activate the following two things simultaneously: the camera flash within 30 cm (12 inches) of the sensor that is being tested, and the binary input used for the overcurrent condition (I>).
3. Verify that the indicator LED of the corresponding sensor channel is lit.
4. Verify that the indicator LED of the binary input is lit.
5. Verify the activation(s) of the trip relay(s) by checking the circuit breaker's status, or by monitoring the trip contact's status. The circuit breaker should open, or the contacts operate. Please note that you achieve the best test results when you operate the circuit breaker while testing.
6. Verify that the indicator LED(s) of the corresponding trip relay(s) is lit.
7. If you are using the BO1 binary output or a high-speed output (HSO1 and/or HSO2), verify the signal activation either through the status change of the relevant input, or by measuring the signal output voltage.
8. If you are using the BO1 binary output or a high-speed output (HSO1 and/or HSO2), also verify that the corresponding LED is lit. Please note that BO1 is of the non-latched type.
9. Activate the camera flash within 30 cm (12 inches) of the sensor but do not activate the binary input used for the overcurrent condition (I>).
10. Verify that no trip has occurred and only the indicator LED of the sensor activation is lit.
11. If you are using the BO1 signal and have configured it to send light information, verify that it is activated.

12. Press the **SET** push button to reset all indications and latches.
13. If you are using a binary input as the master trip, activate it and verify that the trip has occurred by repeating the steps 5 and 6.
14. Press the **SET** push button to reset all indications and latches.
15. Repeat the steps 1 through 12 for all sensors.

11.3 Testing the CBFP function

The circuit breaker failure protection (CBFP) function is tested by taking the light signal and the additional trip criterion signal (if applicable) and leaving them active for longer than the set CBFP time (that is, 100 or 150 ms). Check that the correct outputs activated after the set delay time.

11.4 Testing the operation time

An operation time test is not required at commissioning as it is performed by the manufacturer both as a type test and as a routine production test. If you want to have more information of these tests, please refer to the routine test reports sent with the AQ-110 device and/or consult your nearest Arcteq representative for the type test reports.

However, if it is deemed necessary, you can conduct an on-site timing test with the following instructions.

1. Use a calibrated relay test set.
2. Connect one of the test set's outputs to a strong camera flash to initialize the flash and to configure the set's timer to start simultaneously with the flash.
3. Connect one of the AQ-110 device's trip outputs (T1, T2, T3, T4) or high-speed outputs (HSO1, HSO2) to a test set input and configure the input to stop the timer.
4. Place the camera flash within 30 cm (12 inches) of the sensor.
5. Initiate the flash and the timer by using the test set output.
6. Read the measured time between the simulated arc light and the operation of the trip contact.
7. Subtract the digital input delay of the test set from the final measured time (if applicable). For specific test instructions, please consult the manufacturer of the relay test set.

11.5 Test plan example



NOTICE!

Please note that the following test plan is designed for devices with CT inputs!



Basic data	
Date:	
Substation:	
Switchgear:	
Serial number:	

Preconditions	Additional notes
Trip mode (channel 1): <input type="checkbox"/> L> <input type="checkbox"/> L> + I>	
Trip mode (channels 2, 3, 4): <input type="checkbox"/> L> <input type="checkbox"/> L> + I>	
BI master trip in use: <input type="checkbox"/> Yes <input type="checkbox"/> No	
CBFP in use: <input type="checkbox"/> Yes <input type="checkbox"/> No	
CBFP time setting: <input type="checkbox"/> 100 ms <input type="checkbox"/> 150 ms	

Object activated	LED active	T1, T2, T3, T4 active	BO1 active	Additional notes
Sensor channel 1	S1			
	S2			
	S3			
Sensor channel 2	S1			
	S2			
	S3			
Sensor channel 3	S1			
	S2			
	S3			
Sensor channel 4	S1			
	S2			
	S3			
Fiber sensor channel				
Binary inputs	BI1			
	BI2			
Phase current (IL1, IL2, IL3)				
Residual current (IO)				

Involved personnel	
Tested by:	
Approved by:	

12 Troubleshooting

Table. 12 - 13. Troubleshooting guide for AQ-110x variants.

Problem	Possible solution(s)
The sensor does not activate during testing.	Check the sensor's cable wiring. <u>or</u> Check the testing equipment, especially the camera flash intensity (see the Testing chapter for more information).
The trip relay does not operate even when the sensor is activated.	Tripping might require overcurrent signal simultaneously with light signal. Check the DIP switch settings (see the DIP switch settings chapter for more information).
The current measurement's indicator LED is continuously lit.	Check the set current threshold (see the Current threshold settings chapter for more information).
The current measurement's indicator LED is blinking.	Check that the connections of the three phase currents are correct (see the System self-supervision for more information).

13 Technical data

13.1 Operating times

Table. 13.1 - 14. Technical data for relay operating times.

HSO operation delay	2 ms*
Trip relay operation delay	7 ms*
Reset time: - light stage - overcurrent stage	1 ms 50 ms

*) The total trip time when using both the arc light (L>) or phase/residual overcurrent (I>) from this device and the arc light (L>) from an AQ-101 variant or an AQ-102 device.

13.2 Auxiliary voltage

Table. 13.2 - 15. Technical data for the relay auxiliary voltage (Uaux).

Auxiliary power supply	92...265 V AC/DC 18...72 V DC (optional)
Maximum power consumption	5 W, < 10 mΩ
Standby current	90 mA
Start-up inrush current	<150 ms (110 V DC) <600 ms (24 V DC)

13.3 Current measuring circuits

Table. 13.3 - 16. Technical data for the current measurement circuits (IL1, IL2, IL3).

Nominal current	1 A <u>or</u> 5 A
Rated frequency	2...1,000 Hz
Number of inputs	3 (phase)
Thermal withstand: - continuous - 10 s - 1 s	30 A 100 A 500 A
Phase overcurrent setting range	$0.5...6.0 \times I_N$
Measurement accuracy	10 %
Rated AC burden (VA)	10 mΩ (input resistance)
Power consumption of current input circuit	< 10 mΩ

13.4 Rogowski coil measurement inputs

Table. 13.4 - 17. Technical data for the Rogowski coil measurement inputs (IL1, IL2, IL3).

Number of inputs	3 (phase)
Rated frequency (f_r)	50/60 Hz
Secondary voltage (U_s) for Option A: - at 50 Hz, $I_p = 1$ kA - at 60 Hz, $I_p = 1$ kA	22.5 mV 27 mV
Secondary voltage (U_s) for Option B: - at 50 Hz, $I_p = 1$ kA - at 60 Hz, $I_p = 1$ kA	100 mV 120 mV
Secondary voltage (U_s) for Option C: - at 50 Hz, $I_p = 1$ kA - at 60 Hz, $I_p = 1$ kA	333 mV 400 mV

13.5 Binary inputs

Table. 13.5 - 18. Technical data for the binary inputs (BI1, BI2).

Nominal threshold voltage	24 V DC
Threshold: - pick-up - drop-off	Approximately 16 V DC Approximately 15 V DC
Rated current	3 mA
Number of inputs	2

13.6 Trip relays

Table. 13.6 - 19. Technical data for the trip relays (T1, T2, T3, T4).

Number of trip relays	4 NO <u>or</u> 3 NO + 1 NC
Voltage withstand	250 V AC/DC
Carry: - continuous carry - make-and-carry for 3 s - make-and-carry for 0.5 s	5 A 16 A 30 A
Breaking capacity DC*	40 W (0.36 A at 110 V DC)
Contact material	AgNi 90/10

*) When the time constant $L/R = 40$ ms.

13.7 High-speed output(s)

Table. 13.7 - 20. Technical data for the high-speed outputs (HSO1, HSO2).

Number of outputs	2
Rated voltage	250 V DC
Carry: - continuous carry - make-and-carry for 3 s - make-and-carry for 0.5 s	2 A 6 A 15 A
Breaking capacity DC*	1 A/110 W
Contact material	Semiconductor

*) When the time constant $L/R = 40$ ms.

13.8 Binary output(s)

Table. 13.8 - 21. Technical data for the binary output (BO1).

Number of outputs	1
Rated voltage	+24 V DC (internal power supply)
Rated current (max.)	20 mA

13.9 System failure relay

Table. 13.9 - 22. Technical data for the system failure relay (SF).

Number of SF relays	1
Rated voltage	250 V AC/DC
Carry: - continuous carry - make-and-carry for 3 s - make-and-carry for 0.5 s	5 A 16 A 30 A
Breaking capacity DC*	40 W (0.36 A at 110 V DC)
Contact material	AgNi 90/10

*) When the time constant $L/R = 40$ ms.

13.10 Point sensors

AQ-01 point sensor

Table. 13.10 - 23. Technical data for the AQ-01 light point sensor.

Light intensity threshold	8,000 lux 25,000 lux 50,000 lux
Detection radius	180°
Mechanical protection	IP 20
Sensor cable specification	Shielded twisted pair 0.75 mm ² (AWG: 18)
Maximum sensor cable length (per channel)	200 m
Operating temperature	−20...+85 °C

AQ-02 point sensor

Table. 13.10 - 24. Technical data for the AQ-02 light and pressure point sensor.

Light intensity threshold	8,000 lux 25,000 lux 50,000 lux
Pressure threshold (fixed)	0.2 bar above ambient pressure
Pressure measuring accuracy	±1.8 % (of full scale)
Detection radius	180°
Mechanical protection	IP 20
Sensor cable specification	Shielded twisted pair 0.75 mm ² (AWG: 18)
Maximum sensor cable length (per channel)	200 m
Operating temperature	−20...+85 °C

13.11 Fiber optic loop sensors

AQ-06 fiber optic loop sensor

Table. 13.11 - 25. Technical data for the AQ-06 fiber optic loop sensor.

Material	Plastic fiber
Light intensity threshold	8,000 lux
Cable length (min...max)	3...40 m

Cable diameter	1.0 mm
Detection radius	360°
Bending radius	5 cm
Operating temperature	−40...+85 °C

AQ-07 fiber optic loop sensor

Table. 13.11 - 26. Technical data for the AQ-07 fiber optic loop sensor.

Material	Covered glass fiber
Light intensity threshold	8,000 lux
Cable length (min...max)	3...50 m
Cable diameter	1.2 mm
Detection radius	360°
Bending radius	1 cm
Operating temperature	−40...+85 °C

AQ-08 fiber optic loop sensor

Table. 13.11 - 27. Technical data for the AQ-08 fiber optic loop sensor.

Material	Covered glass fiber
Light intensity threshold	8,000 lux
Cable length (min...max)	3...15 m
Cable diameter	1.2 mm
Detection radius	360°
Bending radius	1 cm
Operating temperature	−40...+125 °C

13.12 Disturbance tests

Table. 13.12 - 28. Technical data for the disturbance tests.

Electromagnetic compatibility test	CE-approved and tested according to EN 50081-2 and EN 50082-2
Conducted emission (EN 55011, class A)	0.15...30.00 Hz
Radiated emission (EN 55011, class A)	30.00...1,000.00 MHz

Electrostatic discharge immunity (IEC 244-222 and EN 61000-4-2, level 4)	Air discharge: 15 kV Contact discharge: 8 kV
Electrical fast transients (EN 61000-4-4, class III & IEC 801-4, level 4)	Power supply input: 4 kV, 5/50 ns Other inputs and outputs: 4 kV, 5/50 ns
Surge immunity (EN 61000-4-5, level 4)	Between wires: 2 kV, 1.2/50 μ s Between wire and earth: 4 kV, 1.2/50 μ s
RF electromagnetic field (EN 61000-4-3, level 3)	f = 80...1,000 MHz, 10 V/m
Conducted RF field (EN 61000-4-6, level 3)	f = 150 kHz...80 MHz, 10 V/m

13.13 Voltage tests

Table. 13.13 - 29. Technical data for the voltage tests.

Insulation test voltage (IEC 60255-5)	2 kV, 50 Hz, 1 min
Impulse test voltage (IEC 60255-5)	5 kV, 1.2/50 μ s, 0.5 J

13.14 Mechanical tests

Table. 13.14 - 30. Technical data for the mechanical tests.

Vibration test	2...13.2 Hz (\pm 3.5 mm) 13.2...100 Hz (\pm 1.0 g)
Shock/bump test (IEC 60255-21-2)	20 g and 1,000 bumps/dir.

13.15 Environmental conditions

Table. 13.15 - 31. Technical data for the environmental conditions.

Specified ambient service temperature	-35...+70 °C
Transportation and storage temperature	-40...+70 °C
Relative humidity	Up to 97 %
Altitude	Up to 2,000 m above sea level

13.16 Casing

Table. 13.16 - 32. Technical data for the device casing.

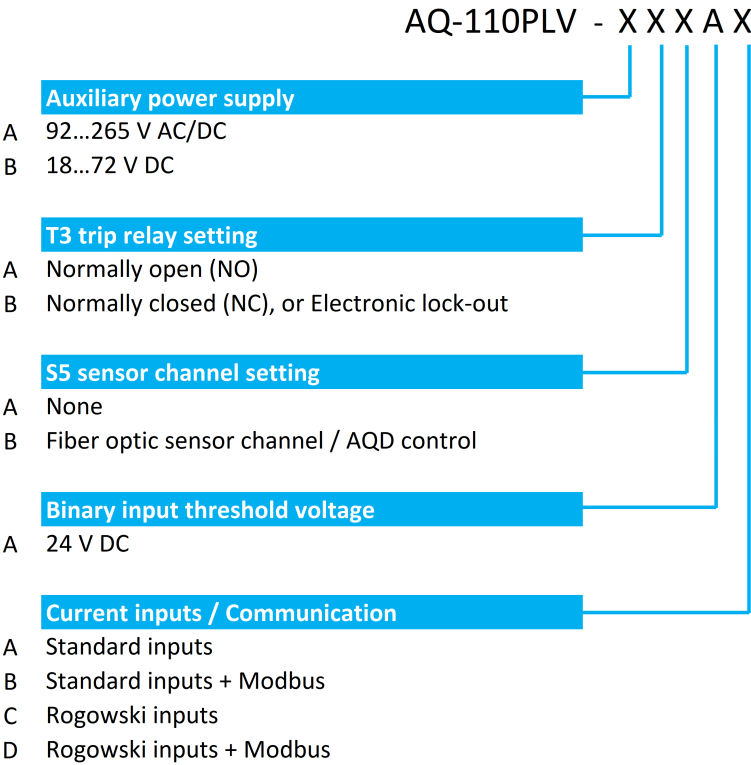
Protection: - front - back	IP 52 IP 20
----------------------------------	----------------

Version: 2.08

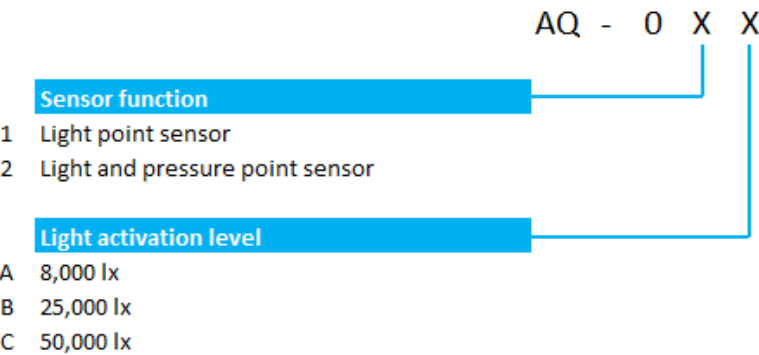
Device dimensions (W × H × D)	102 × 177 × 161 mm
Weight	1.2 kg

14 Ordering information

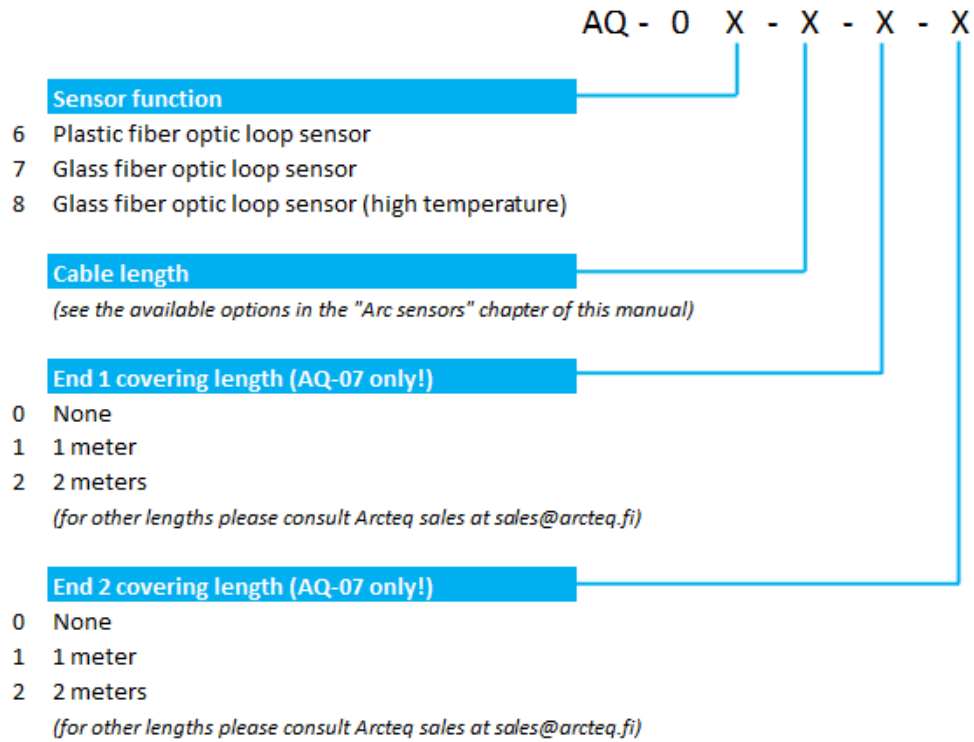
AQ-110PLV current measurement and arc sensing device



AQ-0x point sensors



AQ-0x fiber optic loop sensors



Accessories

Order code	Description	Note	Manufacturer
AX006	Wall mounting bracket	For AQ-103 and AQ-110x variants (MV and LV).	Arcteq Relays Ltd.
AX016	Wall mounting bracket	For AQ-101, AQ-101S and AQ-102 devices (MV and LV).	Arcteq Relays Ltd.
AX033	Sensor bracket		Arcteq Relays Ltd.

15 Contact and reference information

Manufacturer

Arcteq Relays Ltd.

Visiting and postal address

Kvartsikatu 2 A 1
65300 Vaasa, Finland

Contacts

Phone:	+358 10 3221 370
Website:	arcteq.com
Technical support:	arcteq.com/support-login +358 10 3221 388 (EET 9:00 – 17.00)
E-mail (sales):	sales@arcteq.fi